

Busbar cable tray passing through the wall





Busbar cable tray passing through the wall



Electrical busbar system

Electrical busbar systems (sometimes simply referred to as busbar systems) are a modular approach to electrical wiring, where instead of a standard cable wiring to

[Contact Us](#)

unibar M Busbar Trunking System Manual

The unibar M system is used to install a busbar trunking system based on the specific project: Hager is responsible for planning the individual busbar trunking system according to the specifications

[Contact Us](#)



Canalis KT Busbar Trunking System

Canalis KT Busbar Trunking System - Installation Manual Date: 13 Jan 2026 Type: User guide Languages: English

[Contact Us](#)

Electrical Busbar Assemblies Installation Method

This electrical method statement covers the installation of bus bar electrical assemblies. Following this procedure shall ensure that the installation has been



Busway and Cable Tray Installation

Cable Tray Installation is the process of installing a structural system to securely fasten and support cables and raceways. It involves calculating angles and bends as well as measuring and cutting

[Contact Us](#)



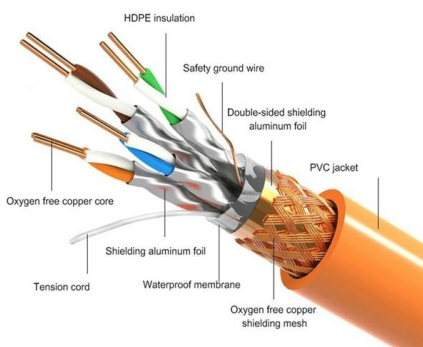
Busbars Installation and Acceptance Standards

Busbars Installation and Acceptance Standards
Are you aware that improper installation of busbars can lead to costly and dangerous electrical

[Contact Us](#)



PRODUCT DETAILS



unibar M Busbar Trunking System Manual

The unibar M Busbar Trunking System is designed for setting up fixed, encapsulated busbar trunking systems BTS (Busbar Trunking Systems) according to EN 61439-6.

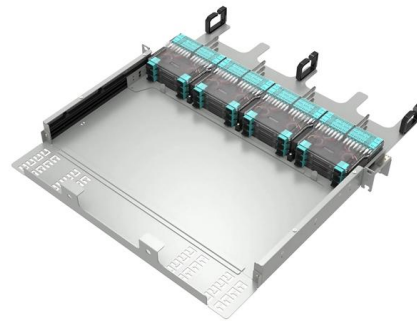
[Contact Us](#)



IEC Standard For Busbar Clearance : Electrical

Know more about IEC Standard for Cable Lugs
Conclusion: Adhering to IEC Standard for Busbar
Clearance The IEC standard for busbar clearance

[Contact Us](#)



Notes On Installation Of Busbar Wall Bushing

It is used for pipelines that require shock
absorption, such as pipes connected to water
pumps passing through the wall.

[Contact Us](#)

Home []

The EZ Path® Series 84+ Fire-Rated Pathway is
a pathway device designed to support high-
capacity cable runs through fire-rated walls
without the need for

[Contact Us](#)



How to Install and Process Busbars in Electrical Panels

Have you ever wondered how busbars, those
critical components in electrical panels, are
expertly installed and processed to ensure
efficient power distribution? If you're an
intermediate

[Contact Us](#)



Busbar Processing & Installation: Your Ultimate Guide

These guidelines govern the busbar processing and installation procedures for all low-voltage switchgear and power distribution enclosures

[Contact Us](#)



Cable Tray Installations Can Be Tricky: Definitions make

Many electrical professionals believe that cable trays are raceways. Based on the definition, this couldn't be further from the truth. Article 100 of the

[Contact Us](#)

Busway Vs Cables

Single core cables in trefoil groups or flat groups Perforated or unperforated trays, with cover or without Conductors arrangement when there are several single core cables by phase Not very flexible (High

[Contact Us](#)



PRECAUTIONS FOR INSTALLATION OF CABLES AND BUSBAR

Energy transport via cables and busbars Cables and busbar systems are the most common and reliable ways to do so, at least until wireless energy transport is developed. However, many potential issues

[Contact Us](#)

How To Run Cable Wires Through A Wall?



Discover safe cable routing through walls: key tips on stud finders, hazard avoidance, and compliance with safety codes.

[Contact Us](#)



Cable Tray and Busway in Electrical Systems

The Vital Role of Cable Tray and Busway in Electrical Systems In modern building electrical systems, cable tray and busway play a crucial role in

[Contact Us](#)

Busbar vs Cable Tray: Power Distribution Explained

Discover key differences between busbars and cable trays in electrical systems. Fuspan offers IEC-certified, export-ready busbar solutions for industrial use.

[Contact Us](#)



Wall Bushings (12kV-40.5kV Epoxy) , Switchgear

A through-wall bushing provides electrical isolation and mechanical support for high-voltage conductors passing through grounded metal partitions (such as between

[Contact Us](#)



THROUGH WALL BUSHINGS

We design these epoxy bushings specifically for medium voltage applications, ensuring they isolate conductors--such as quarter-inch thick copper or aluminum

[Contact Us](#)



Running Cable Through Walls: Our Detailed Guide

Home Guides Running Cable Through Walls: Our Detailed Guide Free shipping over \$99. Easy returns. Satisfaction guaranteed.

[Contact Us](#)

I-Line Application Data

If the dimensions of the tie channel cannot easily be determined, it is best to keep the joint at least 12 inches (305 mm) from the wall. This will ensure proper joint clearance for any type of busway passing



[Contact Us](#)



Busbar and Cable Channels - Barla Energy

What is a Busbar Trunking System? Busbar trunking systems are modular energy distribution solutions designed to meet the power requirements of modern buildings and industrial facilities. They consist

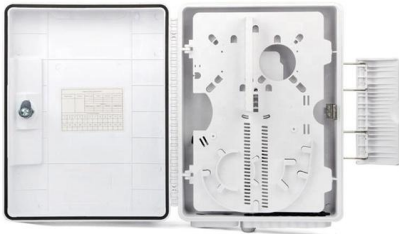
[Contact Us](#)



Installation of hard busbars, wall bushings and post

11.2 Installation of hard busbars, wall bushings and pillar insulators 1. Production and installation of busbars In the power transformation and

[Contact Us](#)



IEC Standard For Busbar Clearance : Electrical

The IEC standard for busbar clearance plays a critical role in the design and safety of electrical panels and power distribution systems. It defines

[Contact Us](#)

Contact Us

For datasheets, pricing, or custom fiber access solutions, please visit:
<https://www.frindel.es>