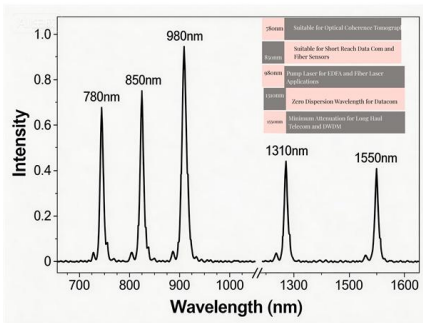


Busbar Wiring in Distribution Box





Busbar Wiring in Distribution Box



Custom Copper Busbar Cabinets & Control Boxes:

Copper busbar cabinets function as high-current carriers for stable electrical transmission, while control boxes--equipped with distribution control

[Contact Us](#)

Design and installation of low voltage busbar trunking

Three typical applications would be: Supply to large numbers of light fittings Power distribution around factories and offices Rising main in office blocks

[Contact Us](#)



How Do MCCB Pan Assemblies and Busbars Work

Power distribution failures cause devastating consequences in critical facilities--production halts, data loss, and safety hazards that can cost millions.

[Contact Us](#)



Electrical Busbars

Electrical Busbars Maintenance and Operation Tips What is a Bus/Busbar? In electrical power distribution, a busbar is a thick strip or bar of copper or aluminum

[Contact Us](#)



Ultimate Guide to Busbar System

Busbar systems offer simple, efficient, and secure distribution of wire to junction boxes in the needed regions. With busbar systems, the junction boxes

[Contact Us](#)



Busbar Power Distribution Explained: Benefits, Types,

Discover the benefits, types, and applications of busbar power distribution systems. Learn why busbars offer efficient, safe, and space-saving

[Contact Us](#)



Bus Bar Box Basic Explanation: Function, Structure and

Bus Bars Boxes enable the management of wires carrying high currents in the simplest way possible, removing the need for multiple wires to be

[Contact Us](#)

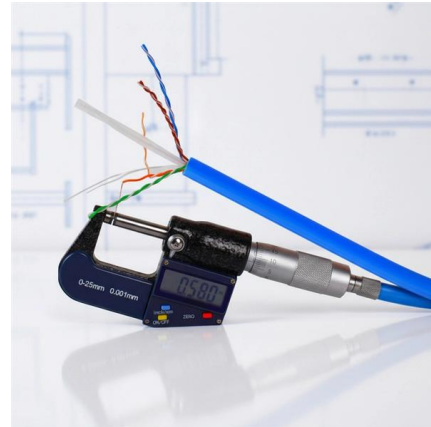




Busbar 101

Busbar power distribution removes both the bulky PDUs and the line-side wiring and cable management necessary to electrify enclosures. What's more, busbar power panels can more easily accommodate

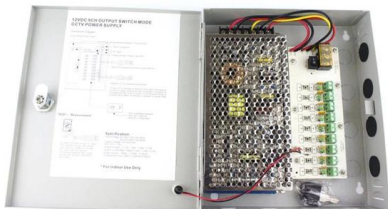
[Contact Us](#)



What is a Busbar? A Detailed Guide

A busbar is a metallic strip or bar used in electrical power distribution, installed inside switchgear, circuit boards, and busway boxes to directly distribute

[Contact Us](#)



How to Wire a Busbar for Safe Power Distribution

Master the critical steps--from tool selection and safety checks to proper crimping and torque--for wiring any electrical busbar safely.

[Contact Us](#)



Electrical wiring and busbar arrangement of distribution box

The distribution busbar is used for the connection between the functional unit components and the bus. The distribution bus (vertical bus) is distributed in the bus compartment. The busbar material is

[Contact Us](#)

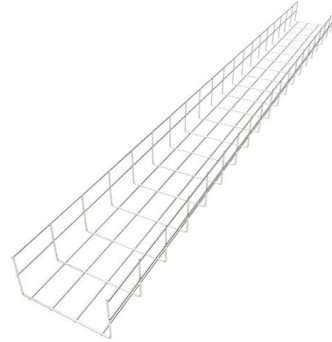




Busbars 101: A Comprehensive Guide

Find out how busbars function as conductive bars to distribute electricity within electrical systems and ensure stable power flow.

[Contact Us](#)



Understanding Circuit Breaker Wiring Configurations in

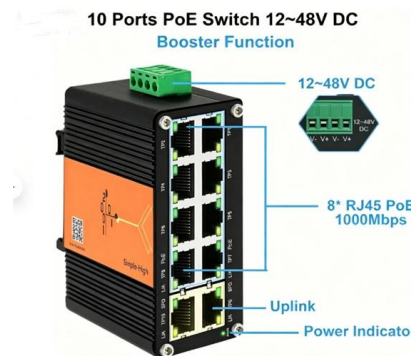
Master the safest and most efficient circuit breaker wiring configurations. Learn about single-phase vs. three-phase setups, safety standards, and future-proof electrical

[Contact Us](#)

A Guide to Electrical Busbars: Common Uses & Design

Get answers for advantages and common uses for electric busbars, types of busbars, and how simulation tools complement the design process.

[Contact Us](#)



Busbar, Bus Stab, Breaker Slot and Circuit Space in a

In this article, we will focus on snapping breakers for branch circuit conductors and explain related terms such as busbars, circuit space, breaker slots, and bus

[Contact Us](#)



Step-by-Step Busbar Installation Guide , Artizono



Traditional panel wiring systems use power distribution blocks (PDBs) and many individual wires to distribute power. However, these systems are

[Contact Us](#)



What is Electrical Bus-Bar?

The various types of busbar arrangement are used in the power system. The selection of the bus bar is depended on the different factor likes reliability,

[Contact Us](#)

What Is A Busbar - Power Distribution In Electrical

A busbar is a rigid conductor, typically made of copper or aluminum, that serves as a common connection point for multiple circuits within electrical enclosures. It

[Contact Us](#)



Electrical Bus Bar Connections - A Detailed Overview

Learn about electrical bus bar connections, their importance in efficient power distribution, and their role in 3 phase busbar panels and busbar boxes.

[Contact Us](#)



Understanding Busbars: The Backbone Of Electrical Power Distribution

Busbars are critical in electrical power distribution for several reasons. First, they provide a streamlined and efficient way to distribute electricity across multiple circuits, reducing the need for complex wiring

[Contact Us](#)



Bus Bar Box Basic Explanation: Function, Structure and

Efficient power distribution is the heart of any electric power system. But developing a method that takes into account the safety, electricity current

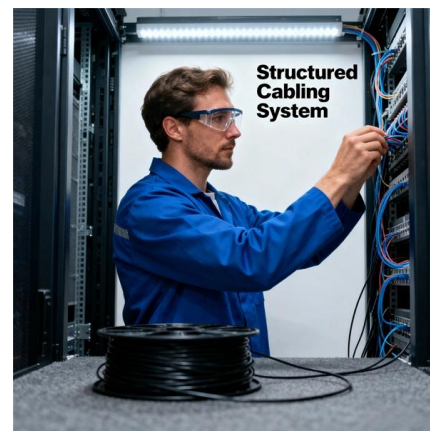
[Contact Us](#)



How to Install Bus Bars in Electrical Panels: A Step-by-Step Guide

Bus bars play a crucial role in electrical distribution systems by providing a reliable and efficient way to conduct electricity within electrical panels. Whether in industrial, commercial, or residential

[Contact Us](#)



Custom Copper Busbar Cabinets & Control Boxes:

Discover how E-abel designs custom copper busbar cabinets and control boxes as an integrated power distribution control system. Learn how this

[Contact Us](#)





Contact Us

For datasheets, pricing, or custom fiber access solutions, please visit:
<https://www.frindel.es>