

Belize cable tray elbows national standard thickness





Belize cable tray elbows national standard thickness



Cable Tray Technical Guide A practical guide to product selection and

In designing supports for a cable tray system, consideration should be given to the loads associated with future cable additions and any additional loading that may be applied to the cable tray system (e.g.,

[Contact Us](#)

NEMA BI 50016-2024

Foreword 267 For cable tray installers: NEMA BI-50016-2024 (hereinafter referred to as NEMA BI-50016) is intended 268 as a practical guide for the proper installation of cable tray systems. Cable

[Contact Us](#)



Cope Ladder Master Spec

Cable tray systems are defined to include, but are not limited to straight sections of [ladder type] [trough type] [solid bottom type] [channel type] cable trays, bends, tees, elbows, drop-outs, supports, and

[Contact Us](#)



Cable Trays In Belize

We, the renowned Electrical Cable Trays Manufacturer and Supplier in Belize, use premium materials like galvanized steel, stainless steel, and fiberglass to manufacture our cable trays. We ensure our



CABLE TRAYS

Vari-cleat cable cleats are available for trefoil single and bundled cable applications where moderate levels of short circuit withstand are required. The unique patented compact design allows the

[Contact Us](#)



CABLE TRAY, CABLE LADDER, CABLE TRUNKING CATALOGUE

Depth (D): 1.2mm, 1.5mm, 2.0mm. Material: Mild steel sheet / PO steel sheet. Constructed Type: MIG welding. er coating / Hot Horizontal Elbow.

[Contact Us](#)



Cable Tray Design and Components Guide

This document provides information about cable trays and accessories, including straight cable trays, perforated trays, returned edge and flange types, and bent

[Contact Us](#)





CABLE TRAY SYSTEM

CABLE LADDER SYSTEM IS A COMPLETE CABLE SUPPORT SYSTEM FOR THE ROUTING OF POWER, DATA AND CONTROL CABLES. OTHER MEDIA SUCH AS GAS AND FLUIDS CAN

[Contact Us](#)



Cable Tray Systems: Requirements and Best Practices

Comprehensive guide to cable tray systems requirements: tray types, materials, loading, supports, bonding, routing, and best practices for safe electrical cable management.

[Contact Us](#)

CABLE TRAY

This standards publication was developed by the NEMA Metal Cable Tray and Nonmetallic Cable Tray Sections. Section approval of the standard does not necessarily imply that all section members voted

[Contact Us](#)



IS 14927-1 (2001): Cable Trunking and Ducting Systems for Electrical

This standard is based on corresponding IEC publication 61084-1:1991 'For cable trunking and ducting system for electrical installations: Part 1 General requirements' issued by the International

[Contact Us](#)





Codes and Standards , Cable Tray Institute

The Cable Tray Institute is making available the current edition of this practical guide for the proper installation of aluminum or steel cable tray systems. These guidelines will be useful to engineers,

[Contact Us](#)



Cable Tray Manufacturers In Belize, Electrical Cable Tray Suppliers

Leading Cable Tray Manufacturers In Belize Cable Trays are important for ensuring the protection of the wiring system and supporting insulated electric cables used for distribution and communication.

[Contact Us](#)

Full cable tray systems specification document

Hardware shall be zinc plated in accordance with ASTM B633 SC1 for pre-galvanized cable trays, or Chromium Zinc in accordance with ASTM F-1136-88 for hot dip galvanized cable trays.

[Contact Us](#)



Cable Tray Dimensions Guide: Standard Sizes, Tray

Explore standard sizes by tray type, understand width and depth limits, and see how to calculate and choose compliant cable tray sizes for real projects.

[Contact Us](#)



LEGRAND CABLE TRAYS TECHNICAL GUIDE

Not all cable trays are equivalent. The mechanical and electrical characteristics, tests, certifications, overall quality management, recommendations mentioned in this technical guide only apply to our

[Contact Us](#)



cable tray system

cable tray systems are manufactured in accordance with the precise standards laid down by the National Electrical Manufacturers Association (NEMA). Thus ensuring standardisation of

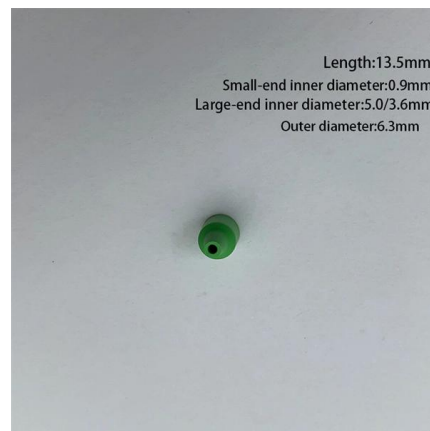
[Contact Us](#)



Cable Tray Technical Guide A practical guide to product selection and

A practical guide to product selection and installation This guide for engineers and installers has been developed by ABB as a practical reference regarding cable tray characteristics, installation, and

[Contact Us](#)



Galvanized Cable Tray In Belize

Galvanized Cable Tray in Belize: Built to Last, Built for Performance We, the foremost Galvanized Cable Tray Manufacturer and Supplier in Belize, use high-grade steel and a meticulous hot-dip

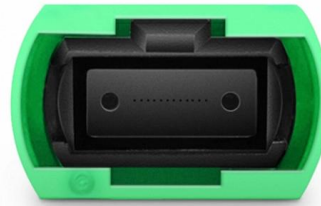
[Contact Us](#)



12-SDMS-06

4.1.2 The Metallic cable trays shall be manufactured in accordance with NEMA VE-1 standard and/or equivalent IEC standard. 4.1.3 Metallic cable trays shall be designed as a mechanical support for

[Contact Us](#)



GUIDE CABLE TRAYS TECHNICAL

Specifies requirements for metal cable trays and associated fittings designed for use in accordance with the rules of Canadian Electrical Code, Part I and the National Electrical Code®

[Contact Us](#)

INTRODUCTION

Standard Cable Trunk Horizontal Bend 90° Connection -Any other values of Radius can be arranged upon request -For Curved type add (C) in the end of code -Any further dimension and specs can be

[Contact Us](#)



Criteria for Sizing, Designing, Installing and Supporting of Cable-Tray

7.3 This standard identifies requirements for cable-tray systems based on the NEC and NEMA standards for the United States.

[Contact Us](#)

Standard Cable Tray Types and Fittings



This document describes the types, materials, dimensions, and fittings for standard cable tray systems. It outlines ladder, perforated, solid bottom, trough, channel,

[Contact Us](#)



Mild Steel Cable Tray In Belize

Mild Steel Cable Tray in Belize for Streamlined Management Engineered with precision and crafted with meticulous attention to detail, our cable trays adhere to industry standards, offering reliable solutions

[Contact Us](#)



CABLE TRAY, CABLE LADDER, CABLE TRUNKING CATALOGUE

Fitting and accessories. Fittings are accessories that connect this cable tray to another cable tray to change direction with the same or different width of the cable run. All fittings are available in sizes

[Contact Us](#)



CABLE TRAY INSTITUTE

The Cable Tray Institute (CTI) was founded in 1991 to support the cable tray industry by engaging in research, development, education, and the dissemination of

[Contact Us](#)

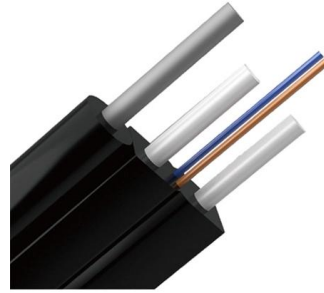




Cable Tray Specifications and Sizes , PDF

The document describes specifications for different types of cable trays, including outside returned flanged cable trays in various standard sizes, light duty and

[Contact Us](#)



Contact Us

For datasheets, pricing, or custom fiber access solutions, please visit:
<https://www.frindel.es>