

Belgian ladder-type cable tray specifications



- Full Customization Support
- Free Design & Fast Sample Service
- Eco-friendly & Certified Materials
- Strict Quality Control

SGS CE ISO 9001:2015
BSCI GCC





Overview

Ladder cable tray is available in widths of 6, 9, 12, 18, 24, 30, 36, 42 and 48 inches with rung spacings of 6, 9, 12 or 18 inches. Note that wider rung spacings and wider cable tray widths decrease the overall strength of the cable tray. Our company (founded in 2012) has quickly become an established player in the cable. Whether specifying a major new project, refurbishing existing facilities or doing the engineering, procurement and construction (EPC) for your end user, with T&B Cabletray, ABB offers reliable solutions du g conforming to ASTM A123 & ISO 1461 : m. Browse or download the cable tray catalog for more information on our full line of cable tray and ladder systems.



Belgian ladder-type cable tray specifications



Cable Tray and Ladder Specifications , PDF

The cable trays are made of mild steel with perforated designs, featuring specific dimensions and hot-dip galvanized coatings, while the cable ladders also utilize

[Contact Us](#)

What is a Ladder Type Cable Tray? Features, Sizes

Explore everything about ladder cable trays - from their components to unique features, sizes, and comparison with other cable trays.

[Contact Us](#)



KJL CATALOGUE 2022-2023 Mobile Version

à1W snolw' Intouoa HOT DIP GALVANIZED CABLE LADDER 122 HEAVY DUTY Series Hot Dip Galvanized dUñaon1uđ KLSG SnotnIŪallaQIQOs dIjñaon1uŪ HOT-DIP GALVANIZED CABLE

[Contact Us](#)



Top Cable Tray Manufacturer in Pune , Indmark Cable

Ladder-type cable trays are an essential components of modern electrical and data cable management systems. These versatile structures provide robust support



FRP Cable Tray Catalog Features & Specs & Applications

Besides, FRP channel cable tray and FRP ladder type cable tray are also available with cover. For further security, covers are used where cable protection is required or desired.

[Contact Us](#)

Resources for Cable tray and ladder systems

Browse or download the cable tray catalog for more information on our full line of cable tray and ladder systems. Eaton's submittal builder tool for B-Line series

[Contact Us](#)



CABLE TRAY, CABLE LADDER, CABLE TRUNKING CATALOGUE

Rung spacing: 300mm. Material: Mild steel sheet / PO steel sheet. Constructed Type: MIG welding. er coating / Ho Horizontal Tee.

[Contact Us](#)





Microsoft Word

A. The fiberglass ladder-type cable tray system shall be manufactured - pultrusion, compression molded, resin transfer molded and/or fabricated by Enduro Composites, Inc., located at 16602 Central Green

[Contact Us](#)



B-Line series Cable Tray Design Considerations

Is your cable tray system optimized for safety, dependability, space and cost savings? Cable tray (or cable ladder) systems are a popular alternative to electrical conduit systems, as they have an

[Contact Us](#)



Product Catalogue Cable Management Solutions

Cable ladder is a more reliable, less expensive solution for supporting cable, which is easier to maintain, proves more adaptable to changing needs, and is more suitable for harsh and corrosive environments.

[Contact Us](#)



Cable Tray Technical Guide A practical guide to product selection and

SOLID-BOTTOM CABLE TRAY Providing additional cable protection, solid-bottom cable tray is sometimes preferred to support and protect numerous small instrumentation and control cables.

[Contact Us](#)

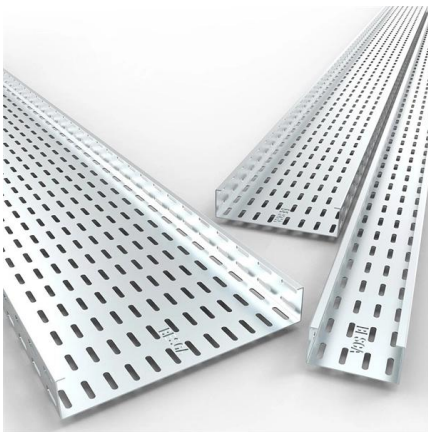




LEGRAND CABLE TRAYS TECHNICAL GUIDE

In accordance with its continuous improvement policy, Legrand reserves the right to change the specifications and illustrations without notice. All illustrations, descriptions and technical information

[Contact Us](#)



TECHNICAL AND SIZING DATA

Determine ladder tray types and sizes, rung spacing, covers if required, the span and support locations and types. If possible avoid the use of unsymmetrically (eccentrically) loaded supports.

[Contact Us](#)



Cable Tray Installation Specifications , PDF , Sheet

Cable Tray Installation Specifications This document provides installation guidelines for cable trays, including: 1) Cable trays come in perforated and ladder types, with

[Contact Us](#)



PATNY Ladder Type Cable Trays (LTCT)

Patny Ladder type cable trays. Patny Systems designed cable trays to provide an efficient and economical method of cable management. Reach us today.

[Contact Us](#)



Best Practice Guide to Cable Ladder and Cable Tray Systems

These guidelines will be particularly useful for the design, specification, procurement, installation and maintenance of these systems. Cable ladder systems and cable tray systems are designed for use

[Contact Us](#)



B-Line series Cable Tray Design Considerations

Our wind certification report provides you with list of acceptable B-Line series cable tray supports, fittings and covers based off of the environmental conditions, cable loading, and type of cable tray in your

[Contact Us](#)



Cope Ladder Master Spec

Cable tray systems are defined to include, but are not limited to straight sections of [ladder type] [trough type] [solid bottom type] [channel type] cable trays, bends, tees, elbows, drop-outs, supports, and

[Contact Us](#)



CABLE TRAYS, CABLE LADDERS CABLE SUPPORT SYSTEMS& CABLE

In building electrical wiring, a strengthened type cable tray system is utilized to support insulated electrical wires used for power distribution, control, and communication. As an alternative to exposed

[Contact Us](#)

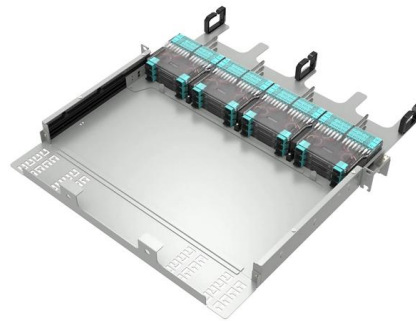




Cable tray systems and cable ladder systems for cable management

9.5 Cable tray systems or cable ladder systems may include system components for the segregation of cables. These shall be adequately secured to other system components.

[Contact Us](#)



Enduro Specification Ladder Cable Tray_04-30-21

Straight section ladder tray shall be prefabricated structures made from fiberglass reinforced plastic, consisting of two longitudinal members (side rails) connected by transverse rungs, meeting all the

[Contact Us](#)

IEC

Where necessary, cable tray systems and cable ladder systems can be used for the arrangement of cables into groups. This document does not apply to conduit systems, cable trunking systems and

[Contact Us](#)



GUIDE CABLE TRAYS TECHNICAL

In accordance with its continuous improvement policy, Legrand reserves the right to change the specifications and illustrations without notice. All illustrations, descriptions and technical information

[Contact Us](#)

Ladder Type Cable Trays



These cables trays also available as welded type with high grade galvanized sheet and other materials such as painted and powder coated finish on mild steel.

[Contact Us](#)



FRP Cable Tray Catalog Features & Specs & Applications

Available type ladder type cable tray ladder type cable tray is assembled with two longitu-sides and a plurality of rungs. The ladder structure is ventilated and has good heat dissipation performance. are

[Contact Us](#)

CABLE TRAY SYSTEMS GUIDE

The Ladder Tray features light, rugged, tubular steel construction. It is designed for mechanical support and strain relief in long runs of cable and creates a smooth gradual bend for cable. Rail and stringer

[Contact Us](#)



Contact Us

For datasheets, pricing, or custom fiber access solutions, please visit:
<https://www.frindel.es>