

Belarusian Low Insertion Loss Splitter with High Precision RoHS Compliance





Belarusian Low Insertion Loss Splitter with High Precision RoHS Compliant



RF Power Splitters/Dividers, RF Power Combiners

Mini-Circuits is a global leader in the design and manufacturing of RF, IF, and microwave components from DC to 86GHz.

[Contact Us](#)

Power Dividers and Combiners

Our products provide low insertion loss and VSWR. Other features include: high isolation, excellent amplitude and phase balance, rugged packaging and all our

[Contact Us](#)



FiberHome LGX-M PLC Optical Splitter - 2x8 SC/APC,

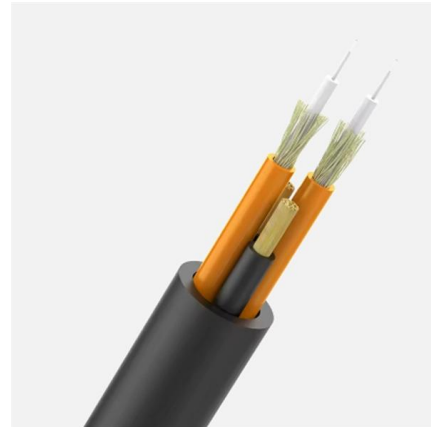
Home Cabling & Connectivity FiberHome LGX-M PLC Optical Splitter - 2x8 SC/APC, G657A Fiber, Low Insertion Loss, Telcordia GR-1209/1221, RoHS,

[Contact Us](#)



Power Splitters/Combiners: Frequently Asked Questions

A. The key performance parameters of a power splitter are usually influenced in the same direction during the design stage. A well-designed power splitter will offer



8.0~12.0GHz X Band RF Microstrip Isolator With Full

The products are in full compliance with RoHS, ISO9001 and ISO14001 international standard, with high-precision testing equipment and QC

[Contact Us](#)



Optical Splitter

Our products meet international standards including Telcordia GR-1209-CORE and GR-1221-CORE, IEC 61753-1, and comply with RoHS regulations. All products undergo comprehensive testing

[Contact Us](#)



8 Way RoHS Power Divider, Combiner, Splitter, Type N

PD2080 is a RoHS compliant, 8 way, wideband, 50 ohm, power divider, power combiner furnished with type-N female coaxial connectors. All wireless band

[Contact Us](#)





Verified Supplier Fiber Optical Splitter Loss Low Insertion Loss

Using high-quality splitters with low insertion loss and proper installation practices—including clean connectors and minimal bending—helps mitigate performance issues.

[Contact Us](#)



Understanding Signal Loss in PLC Splitters: A Comprehensive Analysis

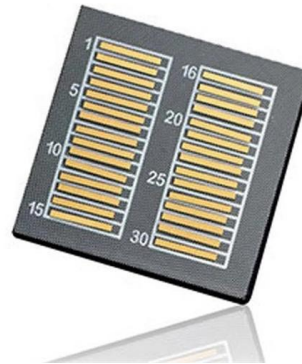
Factors Affecting Port Loss Variations Several factors influence port-to-port loss variations in PLC splitters: Manufacturing Precision: Higher precision in waveguide fabrication results

[Contact Us](#)

Compact and Low-Insertion-Loss 1×N Power Splitter in Silicon Photonics

In this paper, a novel design of a 1×N multimode-interference power splitter is proposed and investigated. By using the finite difference time domain method and particle swarm optimization

[Contact Us](#)



PLC Splitter Performance: IL & RL for PON Networks

Insertion loss (IL) and return loss (RL) are the two most critical parameters when evaluating PLC splitters in FTTx and PON networks. For carriers, enterprises, and broadband service providers,

[Contact Us](#)



Understanding PLC Splitter Loss: What You Need to Know for FTTH

High reliability components SDGI produces only quality products. You can get the following: Insertion loss control through strict quality checks Uniformity across all ports for balanced

[Contact Us](#)



Compact bandpass filter with low insertion loss and high selectivity

In this work, a compact BPF with low insertion loss and high selectivity has been designed and fabricated using 3D glass-based IPD technology. A modified asymmetric structure was

[Contact Us](#)

8 Way RoHS Power Divider, Combiner, Splitter, Type N

Product Overview Wideband Frequency (698 - 2700 MHz) Low Insertion Loss (0.6 dB avg) High Port-to-Port Isolation (30 dB avg) Excellent VSWR (1.15 : 1 avg)

[Contact Us](#)



6 Way RF Power Divider, Combiner, Splitter, Type N

Product Overview Broadband Frequency (0.698 - 2.700 GHz) Low Insertion Loss (0.5 dB avg) High Port-to-Port Isolation (30 dB avg) Excellent VSWR (1.15 : 1)

[Contact Us](#)



3 Way RoHS Power Divider, Combiner, Splitter, Type N

PD2030 is a RoHS-compliant 3-Way Power Divider, Power Combiner with Type N coaxial connectors. Spanning 698-2700 MHz, model PD2030 offers unparalleled

[Contact Us](#)



PLC Splitter Module

We provide PLC Splitters features low PDL, low excess loss and insertion loss, and high reliability that meet GR-1209-CORE and GR-1221-CORE

[Contact Us](#)

'PS1005T2-R50-FD-T1-LF

Construction: High Purity Alumina Substrate Ni alloy thin-film resistive elements Wrap around electrodes 100% matte tin over Ni terminations (RoHS compliant and Pb Free)

[Contact Us](#)



The Ultimate Guide to Insertion Loss Reduction

Discover the latest strategies and techniques for reducing insertion loss and optimizing RF system performance. Learn how to select the right components, design efficient circuits, and

[Contact Us](#)



1×8 Cassette PLC Splitter

High-density 1×8 Cassette PLC Splitter from Telhua. Features low insertion loss, tool-less installation, and compliance with IEC/TIA/EIA/RoHS

[Contact Us](#)



A compact and low-loss 1×8 optical power splitter using silica-based

A 1×16 optical power splitter in polymers using hot-embossing process was reported . This method can obtain high precision but it needs high cost. A compact silica-based PLC-type 1×32

[Contact Us](#)

HTL Ltd. , Optical Splitters

Optical splitters are based on planar light wave circuit technology and high precision alignment. MXN splitters can split or combine light from one or two fibers into N outgoing fibers uniformly over a wide

[Contact Us](#)



Splitters

Precision Group offers many solutions for Fiber Optic Splitters. We have BARE PLC splitters for in the splice case, BARE with connectors for Pedestal or NID applications, LGX Style with or without

[Contact Us](#)



High-Performance Low Insertion Loss PLC Splitter for Reliable

Discover our high-performance 1×N or 2×N single-mode, passive power splitter utilizing advanced PLC technology. This device ensures uniform distribution of optical signals from input ports to multiple

[Contact Us](#)



Understanding Insertion Loss

By combining inductors and capacitors, we can build many types of filters, such as high-pass, low-pass or band-pass. Popular filter configurations include L-C, C-L-C (?) or L-C-L (T). The performance of a

[Contact Us](#)

-Teleweaver in China

Insertion loss testing of optical splitter is very important to ensure compliance to the optical parameters of the manufactured splitter in accordance to the GR-1209

[Contact Us](#)



Broadband Fiber Optic Splitters

Low loss under extreme environmental conditions ensures stable operation. Very compact packages with bend resistant fiber allow these modules to be installed into small compartments such as joint

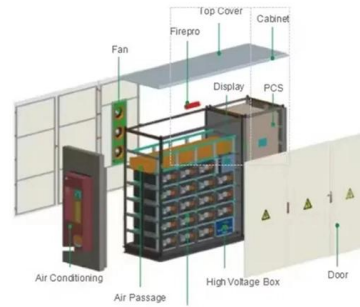
[Contact Us](#)



Resistive Splitters

Resistive splitters are an essential component for signal distribution in RF and microwave systems, offering low insertion loss, wide frequency range,

[Contact Us](#)



AN10-006

A well-designed power splitter/combiner will offer high isolation, low insertion loss and good VSWR. You just don't encounter a power splitter/combiner with high

[Contact Us](#)

Contact Us

For datasheets, pricing, or custom fiber access solutions, please visit:
<https://www.frindel.es>