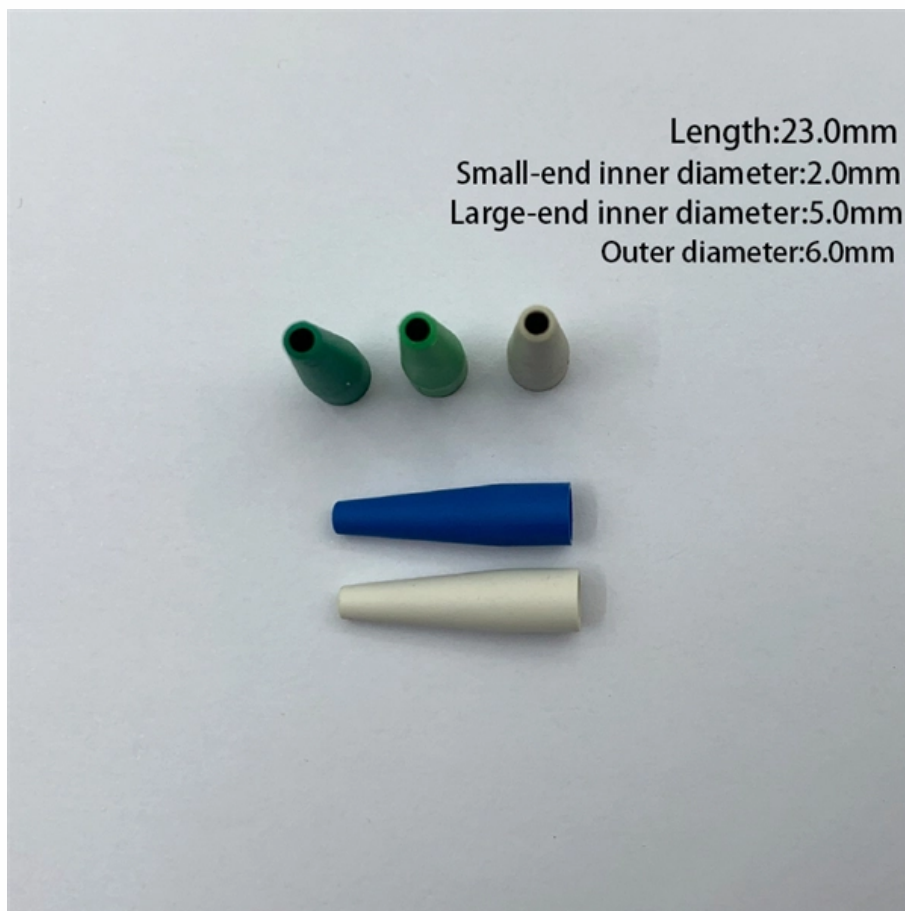


Backplane Connector Testing





Overview

How to review a high-speed backplane PCB before release, with clear boundaries for connector zones, stackup and transition cleanup, inspection access, THT versus press-fit routes, and staged validation handoff. OIF's CEI-224G family — spanning XSR (on-package), VSR (chip-to-module), MR (chip-to-chip), and LR (backplane / copper cable) — is the architectural anchor for 1.6T Ethernet, PCIe Gen7, NVLink 6, UALink, CXL next-gen, and 448G roadmap demonstrations. Impairments introduced at the backplane from module loading must be verified at the system level using a calibrated measurement system. Assuring signal integrity (SI) at high data rates while minimizing cost is a major guideline when designing high-speed interconnects and backplanes incorporating the latest PCIe®, USB-C, Thunderbolt™, and other standards. Comprehensive Test Capabilities Amphenol BSI offers a comprehensive suite of testing options: Flying Probe/AOI Testing: Ideal for proto/small volume builds, this method ensures precision and reliability. ICT and Functional Testing: For high-volume production, we rigorously test to meet stringent.



Backplane Connector Testing



Amphenol BSI - The Backplane Experts

Leveraging our traditional backplane architecture, we integrate Amphenol PCB, connectors, and comprehensive backplane design, assembly,

[Contact Us](#)

High Speed Backplane Connectors

Backplane Connectors ignited as I/O plug-in modules. The industry standard defines these connectors by 1 & P3 dimensional constraints. Data sampling rates exceeding 2 Gbps can be driven via matched



[Contact Us](#)



224G SerDes Testing: 2026 Backplane Connector Impedance

Every hyperscaler building scale-up and scale-out AI fabrics in 2026 is forced to validate 224G backplane connectors at a level of precision that didn't exist two generations ago.

[Contact Us](#)

Backplane Cable Test

Backplane and cable test systems from Terotest include LINX, a fixtureless test system. Each LINX test card plugs directly into the unit under test, which removes the necessity for long test cables and



The Ultimate Guide to Backplane PCBs

Dive into the ultimate guide to Backplane PCBs! Learn how these essential components power complex systems and optimize your electronic designs.

[Contact Us](#)



Advanced Backplane Fabrication , Design,

Backplane Design, Manufacturing & Testing For decades, Sanmina has been the technology leader for the world's most advanced backplanes. Leading

[Contact Us](#)



High-Speed Backplane PCB Design Review for Connector-Zone and

How to review a high-speed backplane PCB before release, with clear boundaries for connector zones, stackup and transition cleanup, inspection access, THT versus press-fit routes, and

[Contact Us](#)

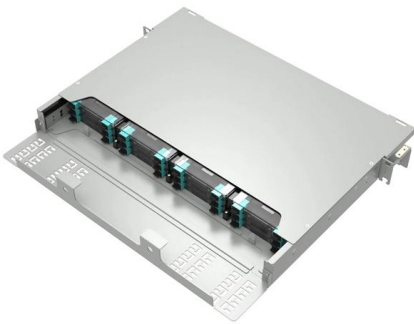


PCB and Backplane Validation



PCB and Backplane Validation is the process of testing, analyzing, and verifying the electrical and mechanical integrity of printed circuit boards (PCBs) and the backplanes that interconnect system

[Contact Us](#)



Backplane/Chassis Test

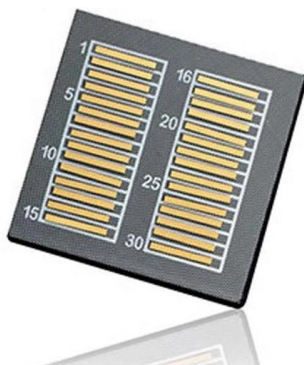
Backplane/Chassis Test WEETECH's Backplane/Chassis Test Solutions are designed for open, short and component testing of backplanes and chassis.

[Contact Us](#)

Backplane Assembly and Test Challenges

Abstract: Backplane Assembly and Test Challenges While Backplane Assemblies remain simple in complexity, their large form factor PCB's drive unique challenges for assembly and test processes.

[Contact Us](#)



Testronics :: Backplane Tester :: Model 402 Backplane Test System

Testronics Model 402LV Level IV Backplane Test System High throughput / high speed test of large backplanes, backpanels & midplanes The trend in backplane / backpanel manufacturing is to build

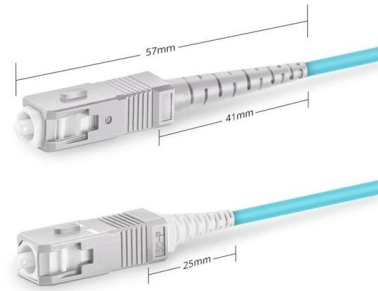
[Contact Us](#)



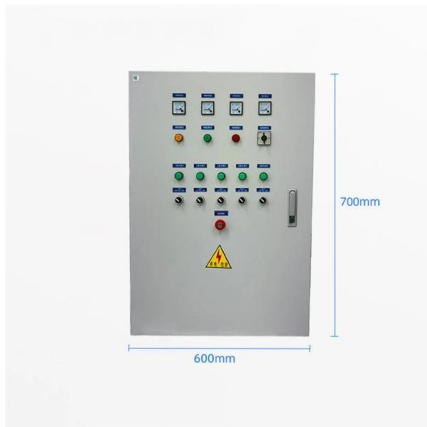
Signal Integrity Backplane Testing

The pattern generator will transmit test patterns such as compliance, PRBS, or custom, having varied stresses at amplitude that will need to be calibrated for correct stress impairments - needed for

[Contact Us](#)



Simplex SC UPC



PCIe Protocol Test Backplanes: P5563B , Keysight

The Keysight P5563B PCIe 6.0 Protocol Test Backplane provides a convenient means for testing PCIe 6.0 add-in cards with a self-contained portable and

[Contact Us](#)

weotech: WK 260 DC The flexible, fast and reliable

The WK 260 DC is the optimal tester for backplane wiring. Connection test, termination test, component test, function test of buttons and switches, function

[Contact Us](#)



Interconnects and Backplanes , Anritsu Europe

Higher data rates introduce new design challenges for SI engineers when validating, debugging, and troubleshooting high-speed interconnects and backplanes.

[Contact Us](#)



LINX is a Fixtureless Backplane Test System offering an innovative, reliable and easy to use solution for the testing of all backplanes and cable harness assemblies.

[Contact Us](#)



What is PCB Backplane Testing?

Backplane testing evaluates the working of backplanes and passive electronic components such as resistors, capacitors, and diodes. The backplane provides the physical and

[Contact Us](#)

How to Select a High Speed Backplane Connector

2298081-1 high speed backplane connector photograph and mounting diagram from TE Connectivity/AMP, from the 2298081-1 datasheet.

[Contact Us](#)



High Speed Backplane Interconnect Solutions

QUICK REFERENCE GUIDE The emergence of faster data rates and decreasing signal rise times requires better performing, high-speed connectors. TE Connectivity's (TE) broad portfolio of high

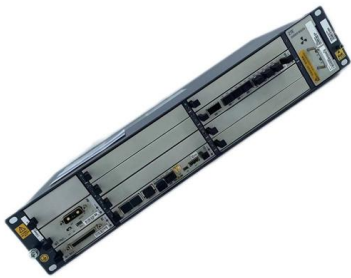
[Contact Us](#)



Industrial Backplane , Embedded Computing Board

The Amphenol industrial backplane connector range is one of the broadest and includes hard metric, future bus, and DIN 41612 connectors.

[Contact Us](#)



ExaMAX® High-Speed Backplane System

The ExaMAX® Backplane SI Evaluation Kit provides system designers and SI engineers an easy-to-use solution for testing ExaMAX® Backplane Cable

[Contact Us](#)



Pre-Terminated Patch Panel

- Standard 19" width
- Max 144 fibers in 1U
- MPO/Fusion Dual-Purpose



Removable Cable Management Tray



Transparent Front Cover



High-Quality Matte Coated Steel

Designing Scalable 10G Backplane Interconnect Systems

This paper presents techniques for design which significantly reduce modeling requirements for the design of high-speed backplanes in conjunction with advanced testing techniques which provide

[Contact Us](#)



High Speed Backplane Connectors

Testing Capabilities Smiths Interconnect Quadrax and Twinax interconnects are characterized for testing eye pattern, jitter, skew, and insertion loss on differential pair 100 Ohm high speed Gigabit Ethernet

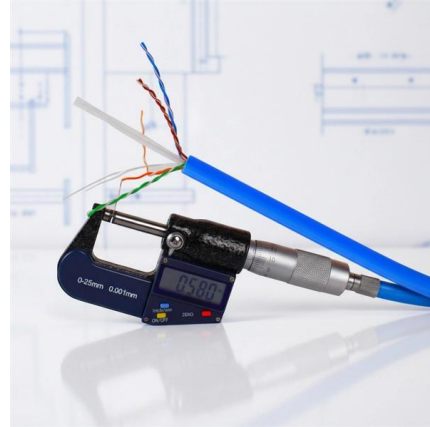
[Contact Us](#)



Amphenol BSI - The Backplane Experts

Amphenol has been at the forefront of backplane assembly design and manufacturing for over 30 years. The industry's leading connectors and

[Contact Us](#)



Testronics Model 603d: 3d Backplane Profiling

Test Backplanes up to 50" x 30", (127cm x 76cm) Scan a 10", (25cm) connector in 18 seconds Create a new backplane program in 3 - 5 hours Testronics 3d Backplane

[Contact Us](#)

Designing Scalable 10G Backplane Interconnect Systems

Introduction The design and implementation of high-speed backplanes requires substantial effort both in pre-pro-otype modeling and post-prototype testing and measuring. Extant methods for modeling

[Contact Us](#)



Contact Us

For datasheets, pricing, or custom fiber access solutions, please visit:
<https://www.frindel.es>