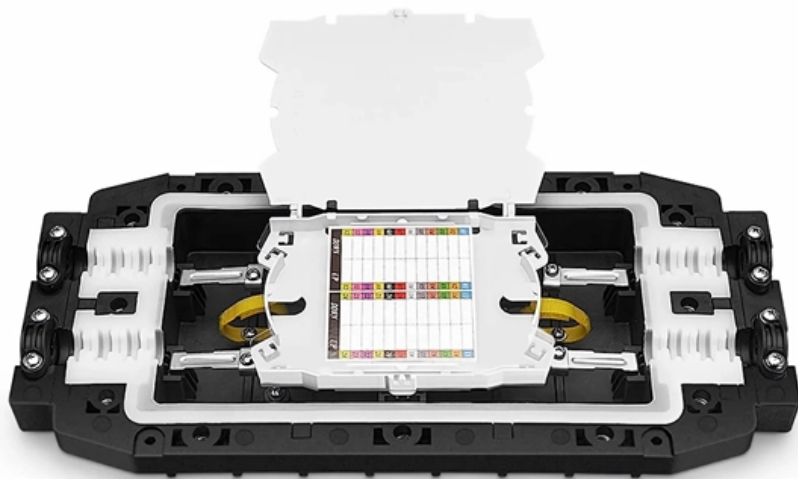


# **BERT Error Rate Tester Calibration in Slovakia**





## BERT Error Rate Tester Calibration in Slovakia

---



### **Bit Error Rate Tester (BERT) , Available to Rent or Buy**

All our Certified Pre-Owned bit error rate testers are carefully checked and calibrated in our labs as part of the rigorous 23-step certification process which ensures

[Contact Us](#)

### **New Bit Error Rate Tester (BERT) Price, Buy, Purchase, Sale, Sell**

Custom-Cal has new Bit Error Rate Tester (BERT) 's ready for purchase at a great price. All units sold by Custom-Cal are provided with an applicable NIST traceable calibration/performance verification.

[Contact Us](#)



### **Test Equipment**

Using an externally supplied transmit clock the BERT can generate data at rates down to 0 bps and supports gapped or burst clocking. Our BERTs have an

[Contact Us](#)

### **What is a Bit Error Rate Tester (BERT)?**

Learn what a Bit Error Rate Tester is and how it's used to test the end to end performance of signal transmission.

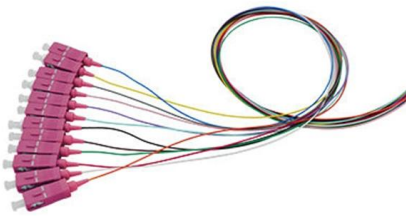
[Contact Us](#)



### Bit Error Ratio Testers

A review of common sources of errors and seven VNA calibration methods to improve measurement accuracy. A comparison of each is provided, along with

[Contact Us](#)



### High-Performance BERTs

Choose from one of our most popular BERT configurations based on supported data rates and line coding or configure one specific to your application needs.

[Contact Us](#)



### Bit Error Rate Tester Rentals , BERT Test Equipment

Bit Error Rate Testers, or BERT, test for elements of a data stream that, while being transferred over a transmission channel, experienced interference.

[Contact Us](#)





### **BER test method uses real data**

While more work needs to be done, the test method proposed here shows promise for using real-world data for testing digital communications

[Contact Us](#)



### **Bit Error Rate Test (BERT)**

Bit Error Rate (BER) is a measure of telecommunication signal integrity based on the quantity or percentage of transmitted bits that are received incorrectly.

[Contact Us](#)

### **Bit-Error-Rate Testers - Optellent**

The OPTELLENT OptoBERT(TM) OPB4250 is a cost-effective easy-to-use bit-error-rate tester (BERT) for testing Fibre Channel (FC) devices, components, modules and systems in R& D and manufacturing

[Contact Us](#)



### **36 Facts About Bit Error Rate Tester**

BERTs are used in various fields like telecommunications, networking, and broadcasting. They measure the rate of errors in a data stream,

[Contact Us](#)



## Bit Error Rate Test (BERT)

Whether you are looking for the smallest handheld 100G bit error rate tester in the world for your field job, or perhaps your needs take you into the lab, VIAVI has

[Contact Us](#)



## Introduction Of Bit Error Rate Tester , by Kern Piter

In order to ensure that the bit error rate can be measured easily and quickly, you need a bit error rate tester.

[Contact Us](#)

## SBS Berg Telemetry Systems Introduces The Model 4419-P Bit Error Rate

SBS Berg Telemetry Systems Introduces u000bThe Model 4419-P Bit Error Rate Tester (BERT) SBS Berg Telemetry Systems announces the introduction of its new Model 4419-P Bit Error Rate Tester

[Contact Us](#)



## Ethernet BERT Testing , 10G 1G IP Analysis

What is Bit Error Rate Testing (BERT)? Bit Error Rate Testing (BERT) verifies the integrity of Ethernet links by transmitting pseudo-random test patterns and

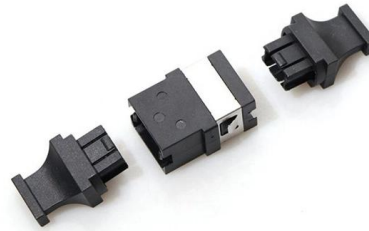
[Contact Us](#)



## Bit Error Ratio Testers

Keysight's bit error ratio test (BERT) system enables the most accurate physical-layer design verification of high-speed communication and multi-gigabit digital

[Contact Us](#)



### What is a Bit Error Rate Tester (BERT)?

A Bit Error Rate Tester (BERT) is a device used to test the end-to-end performance of signal transmission in many applications. It allows for the identification and correction of errors in

[Contact Us](#)

### Bit Error Rate Testing: BER Test BERT » Electronics Notes

Bit Error Rate Testing: BER Test Bit Error Rate Testing is one of the key methods of determining the performance of a radio, wireless wired or telecommunications

[Contact Us](#)



### Bit Error Rate - tester, BERT, data transmission

The bit error rate of a data link - for example, a fiber-optic link - is the average fraction of wrongly transmitted bits.

[Contact Us](#)



## Bit Error Rate Tester

See how a Tektronix Bit Error Rate Tester helps you perform comprehensive bit error rate analysis to reduce development cycles and costs.

[Contact Us](#)



## What is a Bit Error Ratio Tester (BERT)? , Keysight

A Bit Error Ratio Tester (BERT) is a piece of electronic test equipment used to measure BER in a data transmission system. Learn more.

[Contact Us](#)



## BERT -- Multilane

Bit error rate testers (BERTs) are usually the initial step for communications testing. These instruments generate digital test patterns, typically pseudorandom binary sequences (PRBSs), that drive devices

[Contact Us](#)



## What is a Bit Error Ratio Tester (BERT)?

What Does a BERT Measure? When you transmit data from one location to another, there are errors introduced due to a variety of factors including signal to noise, distortion, and jitter.

[Contact Us](#)



## Bit Error Rate Testers (BER, BERT, BERTS)

Bit Error Rate Testers (BERT) test end-to-end integrity of digital communications channel by logging data errors. Buy or rent BERTS here with 24/7 support.

[Contact Us](#)



## Bit Error Rate or Bit Error Ratio , Keysight

To find the bit error rate or bit error ratio of your system, you need a Bit Error Rate Tester or Bit Error Ratio Tester (BERT). BERT refers to a class of test equipment.

[Contact Us](#)

## BERT

Anritsu is a world leader in Bit Error Rate test and measurement products. These products reflect that global leadership, addressing data rates from 100 Mbit/s to 64.2 Gbit/s.



[Contact Us](#)



## BERT-50

Calibration & Test Equipment Repair The BRL Test Lab offers in-house ISO9001:2015 compliant calibration to its end users and industry professionals

[Contact Us](#)



## **BERT (Bit Error Rate Tester) and Its Role in High-Speed**

Conclusion Using a BERT for testing is essential for validating the performance and reliability of high-speed digital communication systems. It

[Contact Us](#)



## **Anritsu MP1900A Receiver Link Equalization Calibration Procedure**

This video explains more about the most complex Rx Link Equalization part of the MP1900A Compliance Test. Rx Link Equalization is executed in three steps: Step1: Perform calibration to put the measuring

[Contact Us](#)

## **Contact Us**

---

For datasheets, pricing, or custom fiber access solutions, please visit:  
<https://www.frindel.es>