

Appearance requirements for cable trays in computer rooms





Appearance requirements for cable trays in computer rooms



Microsoft Word

.3 Where cable tray is install in server rooms, tray will be exposed and will require multiple receptacle outlets of various CSA configurations. This will require confirmation with the FMGT Project Officer

[Contact Us](#)

Table of Contents

They shall maintain proper cable bend radii and provide room for additional cables. Provide split or dual channel raceway for installations that require both power and telecommunication services to share

[Contact Us](#)



Section 16111

B. electrical be cable tray utilization via an approved points connector. in determine Separation cables of if in sprinkler be reviewed requirements Hanover Fire Department necessary due to to C. different

[Contact Us](#)



Cable trays are structural components of a facility's electrical system

Cables in these trays are easy to mark, find, and remove. If the cable tray system is not managed properly and overloading, mixing of cable classifications, improper grounding, and other Code non



Telecommunication Room (TR) Requirements & Standards v3.2

The number of 4" or 102mm conduits required depends on the number of cables and size of tray. Use a 40% fill ratio to determine the number of 4" or 102mm conduits.

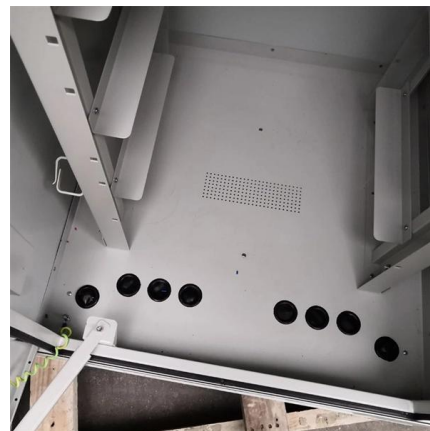
[Contact Us](#)



Mastering Cable Tray Installation , Step-by-Step Guide for a Seamless

Conclusion Mastering cable tray installation is crucial for creating a safe, organised, and efficient cable management system. By following this step-by-step guide, you can ensure a seamless

[Contact Us](#)



Cable Tray Technical Guide A practical guide to product selection and

This guide for engineers and installers has been developed by ABB as a practical reference regarding cable tray characteristics, installation, and requirements.

[Contact Us](#)





IDC computer room comprehensive wiring method

An IDC (Internet Data Center) computer room is a critical facility that requires a comprehensive wiring method to ensure the reliable and efficient operation of the network

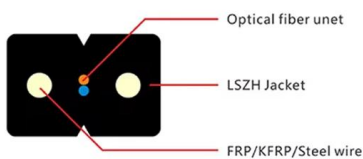
[Contact Us](#)



Cable Tray SHIB NAL

Cable trays are not raceways, but they are treated as a structural component of a facility's electrical system. Cable trays are a part of a planned cable management system to support, route, protect and

[Contact Us](#)



SECTION 26 05 36 CABLE TRAYS FOR ELECTRICAL SYSTEMS

Cable tray shall be aluminum 12 inches wide ladder bottom supported from both sides sized to support the cabling load. Solid bottom cable tray is permissible in the event that the working clearances as

[Contact Us](#)



Standards for Telecommunication Rooms , Information

Each telecommunication room is to be provided with its own dedicated panel. Panel size is dependent on room capacity and should be sized with future growth in mind.

[Contact Us](#)



GUIDE CABLE TRAYS TECHNICAL



Specifies requirements for metal cable trays and associated fittings designed for use in accordance with the rules of Canadian Electrical Code, Part I and the National Electrical Code®

[Contact Us](#)



2005

INTRODUCTION The B-Line Cable Tray Manual was produced by B-Line's technical staff. B-Line has recognized the need for a complete cable tray reference source for electrical engineers and

[Contact Us](#)

The Standard for Cable Trays: How to Ensure Safe

However, cable trays must comply with specific codes and standards to ensure proper design, installation, and maintenance. This article will provide an in-depth

[Contact Us](#)



Standards for Telecommunication Rooms , Information

Trays, Sleeves, and Ducts Cable tray from hallways should extend into the telecommunications room and connect to a cable tray extending across the top of

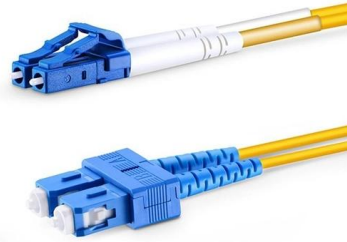
[Contact Us](#)



Server Room Cable Tray Guide: Best Types, Sizing

In this guide, we will walk through how to select, design, and install cable trays specifically for server room environments, helping you avoid common

[Contact Us](#)



Cable Tray Systems: Requirements and Best Practices

This article explains the main requirements and good practices for cable tray systems, including tray types, materials, loading, supports, bonding, cable selection, and installation details.

[Contact Us](#)

NEMA and NEC Regulations for Cable Tray Requirements

Follow installation practices to meet cable tray requirements, ensuring proper support, routing, and compliance with safety regulations.

[Contact Us](#)



The Role of Cable Trays in Data Centers and Server

Using cable trays in server rooms can help ensure compliance with these standards and avoid potential fines or legal liability. Cable trays are designed to provide a

[Contact Us](#)





SECTION 270528 -- CABLE TRAY FOR TELECOMMUNICATIONS

Clearance requirements for cable tray accessibility: Maintain a clearance of 6" between top of cable tray and ceiling structure or other equipment or raceway.

[Contact Us](#)



Cabling a Data Center to TIA-942 Standard - Fosco

If using cable tray - Minimum of 12" between trays Access Floors Allocate separate aisles for power and telecommunications cabling If not possible, then provide

[Contact Us](#)

Section 27 05 36 Cable Tray for Communications Systems

3.2.1 Cable trays shall be sized (including 10% growth) as per the drawings and will accommodate all horizontal and/or backbone cabling within the Telecommunications Room as well as entering/existing

[Contact Us](#)



Telecommunication Room (TR) Requirements & Standards v3.2

Cable trays to be installed according to electrical code. Telecommunication Outlets (TOs) can also be connected to the TR via a combination of cable tray and conduit.

[Contact Us](#)



Types of Cable Trays - Advantages, Applications and Sizes

Explore the types of cable trays, their advantages, applications, and standard sizes. Learn how they improve cable management and support various industries.

[Contact Us](#)



Full cable tray systems specification document

B. Cable tray systems are defined to include, but are not limited to straight sections of [ladder type] [trough type] [solid bottom type] [channel type] cable trays, bends, tees, elbows, drop-outs, supports

[Contact Us](#)

Essential guide for Cable Tray Installation in Data Centres

Essential guide for Cable Tray Installation in Data Centres. Learn planning, materials, types, installation steps, safety, and maintenance for data halls.

[Contact Us](#)



Contact Us

For datasheets, pricing, or custom fiber access solutions, please visit:
<https://www.frindel.es>