

AI-21 Distribution Box





Overview

Smaller portable connection panel suitable for work on smaller building sites, renovation, refurbishment and extension work, etc. Made of impact resistant thermoplastic with self-closing safety cover of clear plastic. Distribution box 210 flange 13/13 AloySafely conduct, connect and distribute energy in hazardous areas with R. We offer bespoke, custom-made terminal boxes and terminal box combinations, as well as standard products with short delivery times. They are available in different variants: with fixed master cable, field-assemblable and with an M12, M16 or M23 connection. IP20 IK06 in C100, C101, C103 when installed with a lid and mounted recessed in walls or ceilings. Type U GBL is a plastic encapsulation formed as a bag, but which is also suited for wall mounting and which can be mounted in a steel box of type LBS 16-6.



AI-21 Distribution Box



CONNECTION BOX21 SP

The junction boxes are primarily adapted to be mounted on enclosed distribution boxes. The boxes are designed with one flange opening open when the lid is removed.

[Contact Us](#)

PDM71009ZXM , HWB60_AL Series Hard-Wired PDMs

The HWB60-AL Series Hard-Wired Waterproof Power Distribution Box with AssureLatch(TM) (PDM71009ZXM) is a great choice for protecting accessory

[Contact Us](#)



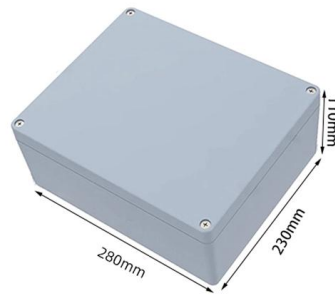
Sensor/actuator & Fieldbus distribution , Distribution boxes for sensor

The distribution boxes are available with M8 and M12 slots. They are available in different variants: with fixed master cable, field-assemblable and with an M12, M16 or M23 connection.

[Contact Us](#)

Aluminium Distribution Boxes For Zone 1-21 and Zone 2-22

The document details specifications for aluminium distribution boxes designed for hazardous areas (Zone 1/21 and Zone 2/22) with explosion protection



XL-21 AC Distribution Box Manufacturer , Factory Direct

Reliable XL-21 AC low-voltage distribution boxes for industrial and infrastructure use. Certified manufacturer offering OEM service and global delivery.

[Contact Us](#)



XL-21 Low-Voltage Power Distribution Box , 380V 800A

Fulleto Electric manufactures the robust XL-21 low-voltage power distribution box. Rated for 380V 800A, it offers superior dustproof protection and safety for

[Contact Us](#)



Terminal boxes , Junction boxes , Ex , Ex e , Ex d , ATEX , Explosion

Terminal boxes for safe installation in hazardous areas Safely conduct, connect and distribute energy in hazardous areas with R. STAHL's terminal boxes. We offer bespoke, custom-made terminal boxes

[Contact Us](#)





XL-21 Series Low Voltage Power Distribution Cabinet

The XL-21 low-voltage power distribution cabinet is suitable for three-phase four-wire systems with AC voltages up to 500V. It is primarily used for power.

[Contact Us](#)



DISTRIBUTION BOARDS

Extol International are the leading suppliers of Control Panels & Distribution Boards for hazardous areas and explosive atmospheres - a comprehensive range of Explosion Proof control panels are available

[Contact Us](#)



aluminium-klemmenkasten aluminum-terminal-boxes

While keeping stock materials for the boxes, having well selected sub suppliers, skilled engineers and an internal process, that is made for customized special solutions, we can guarantee short delivery

[Contact Us](#)



Distribution Box Guide: Types, Components & Solutions

Understand distribution boxes (DB boxes) in 5 minutes. Learn about types, components, functions, and uses. Find the perfect DB box for your needs.

[Contact Us](#)



Terminal boxes , Junction boxes , Ex , Ex e , Ex d , ATEX

Safely conduct, connect and distribute energy in hazardous areas with R. STAHL's terminal boxes. We offer bespoke, custom-made terminal boxes and terminal box combinations, as well as standard

[Contact Us](#)



Equipment / derivation boxes , > Products > Store

Indoor electrical installations. Boxes for control gear, branching and spot lights.

[Contact Us](#)

Distribution boxes , Ahlsell - We make it easier to be pr

For Al cable connection, max. 1 // 50mm², pressure washer is used between Al and Cu cables. The plastic material in the G-box is in an environmentally friendly and chemical-resistant design.

[Contact Us](#)



A21,AL Serpac , Boxes , DigiKey

Buy now, ships today. A21,AL - Box Plastic, ABS Almond Split Sides and End Panel (s) 4.250" L x 2.600" W (107.95mm x 66.04mm) X 1.120" (28.45mm) from Serpac.

[Contact Us](#)



DISTRIB BOX 210 I/I LM

All boxes are designed for the assembly of different connection inserts, depending on the cable type and cross section, see the compilation of connection inserts.

[Contact Us](#)



Low Voltage Fixed Electrical Power Distribution Board

XL-21 type low voltage distribution cabinet is suitable for three-phase AC 50/60HZ, max voltage 690V, rated current to 800A power distribution system, Used to

[Contact Us](#)



Distribution Boxes Types - The Complete Guide

The power distribution boxes deliver electricity from the main electrical main to other circuits. Several distribution boxes are designed for specific use in

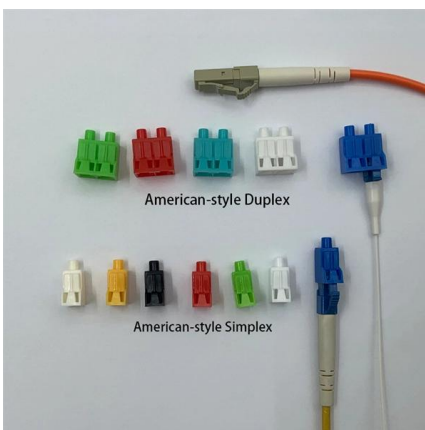
[Contact Us](#)



CONNECTION BOX21 SP

The junction boxes are primarily adapted to be mounted on enclosed distribution boxes. The boxes are designed with one flange opening open when the lid is removed. This permits easier connection of

[Contact Us](#)





GB-distribution box and enclosures

Also the temperature class of the distribution box must meet the respective requirements.
Description The GB-terminal box, both distribution box and empty enclosure, is manufactured of high impact

[Contact Us](#)



Altech AKIII Distribution Boxes Brochure

Distribution box - Industrial Quality -, flange type, with open top and bottom, for use with various flanges or to combine multiple AK-F - distribution boxes with combination flange, 2 rows, 28 modules with

[Contact Us](#)

Low Voltage Complete Control Cabinet XL-21 Power

Low Voltage Complete Control Cabinet XL-21 Power Cabinet Indoor and Outdoor Lighting Distribution Box, Find Details and Price about High Voltage

[Contact Us](#)



Distribution Terminals >> FTG - Friedrich Göhringer

The KVIAC terminals are compact distributors for copper and aluminum cables. Their extremely compact design ensures space-saving installation on DIN rails or

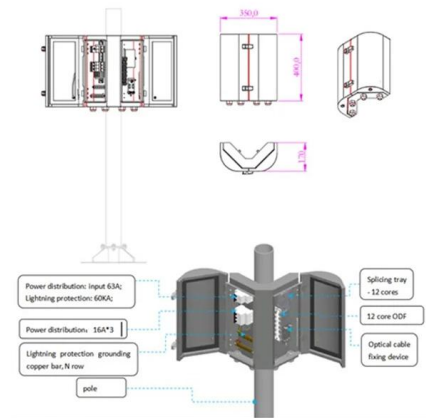
[Contact Us](#)



AL2321 IFM ELECTRONIC

IFM ELECTRONIC AL2321 , Distribution box - This product is available in Transfer Multisort Elektronik. Check out our wide range of products.

[Contact Us](#)



Contact Us

For datasheets, pricing, or custom fiber access solutions, please visit:
<https://www.frindel.es>