

Air-cooled switch QSFP28





Air-cooled switch QSFP28



QSFP28 100G Direct Attach Copper Cables

Regional Availability - Global Siemon QSFP28 100G passive Direct Attach Copper Cable assemblies are designed to exceed industry standard performance offering a cost-effective, low latency, low

[Contact Us](#)

Arista Switch QSFP28 Modules , Product Support

Arista Switch QSFP28 Modules: Access product support documents and manuals, software, download drivers by operating environment, and view product support videos.

[Contact Us](#)



Connectors and Cages

800G flat-top, twin-port, 8-channel, 2x400G OSFP for linking DGX H100 Cedar7 GPU links which use internal cage riding, air-cooled, heat sinks for liquid-cooled systems.

[Contact Us](#)



FS Community

Hier sollte eine Beschreibung angezeigt werden, diese Seite lässt dies jedoch nicht zu.

[Contact Us](#)



QSFP28 Cable Module , Automated Testing Tools

The QSFP28 Cable Module is an automated solution for hot-swap testing and fault injection on QSFP28 cables. Automation provides easier, faster and more

[Contact Us](#)



qsfp28 switch: High-Speed 100G Networking Solutions

Discover top qsfp28 switch options with 32 QSFP28 ports, 100Gbps uplink, and low latency. Find verified suppliers, compare prices, and click to explore reliable high-performance

[Contact Us](#)



Understanding the Difference Between SFP vs QSFP28:

The rapid evolution of network technologies has led to a variety of transceiver modules, each designed to meet specific performance and scalability

[Contact Us](#)





Understanding QSFP Switches: A Comprehensive

Explore the latest QSFP switches for modern network solutions with this comprehensive guide. Learn about port configurations, features, and more.

[Contact Us](#)



S8550-32C, 32-Port Ethernet L3 Switch, 32 x 100Gb QSFP28,

32-Port-Ethernet-L3-Switch, 32 x 100 Gb QSFP28, unterstützt MPLS und MLAG, hyperkonvergente Infrastruktur Der S8550-32C 32-Port-100-Gb-Ethernet-Layer-3-Switch ist ein hochdichter Switch für

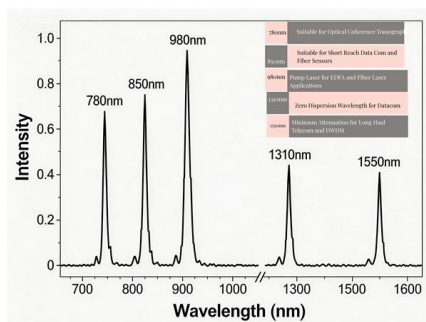
[Contact Us](#)



QSFP28 , Loopback Module , Switch , QCT.io

100G QSFP28 Loopback Module QSFP28 100G, 4-channel parallel passive lookback module is for storages, servers, and switches QSFP28 port testing. The electrical loopback provides a cost

[Contact Us](#)



Contribution Number:

Since the switch and optics are cooled by air, the initial conditions of the air are an important parameter of the simulation. The inlet air temperature was set to 40°C and the elevation

[Contact Us](#)



32-Port Data Centre Switch with 32 100 GbE QSFP28

32-Port Data Centre Switch with 32 100 GbE QSFP28 Ports DQS-5000-32Q28 32 x 100G QSFP28 ports Wire-speed, ultra-low latency switching Supports Open

[Contact Us](#)



Juniper Networks 48 SFP+ and 4 QSFP28, Back to Front Air Flow, AC

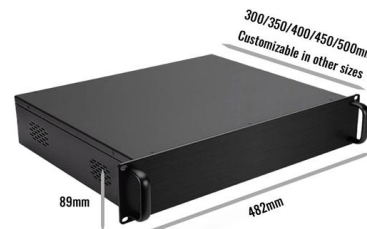
Juniper Networks QFX5110-48S-AFI2 Switch serves as a high-performance network switch with advanced features for managing high-speed data transmission in large-scale environments, using

[Contact Us](#)

Transceivers Explained: SFP vs SFP+ vs SFP28 vs QSFP+ vs QSFP28

Discover the key differences between SFP, SFP+, SFP28, QSFP+, and QSFP28 transceivers. Learn which is right for your network.

[Contact Us](#)



QSFP28 , Loopback Module , Switch , QCT.io

QSFP28 100G, 4-channel parallel passive loopback module is for storages, servers, and switches QSFP28 port testing. The electrical loopback provides a cost effective method for QSFP28 port

[Contact Us](#)



HPE Switch QSFP+ and QSFP28 Modules , Product Support

HPE Switch QSFP+ and QSFP28 Modules: Access product support documents and manuals, software, download drivers by operating environment, and view product support videos.

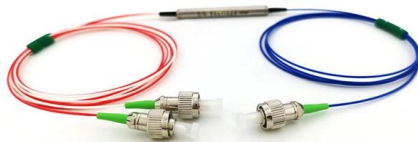
[Contact Us](#)



Juniper QFX5110-48S-AFO2 Switches 48 SFP+ and 4 QSFP28, front

Equipped with 48 SFP+ ports and 4 QSFP28 ports, this switch offers robust connectivity options and front-to-back airflow for efficient cooling. The device is AC-powered, making it an ideal choice for

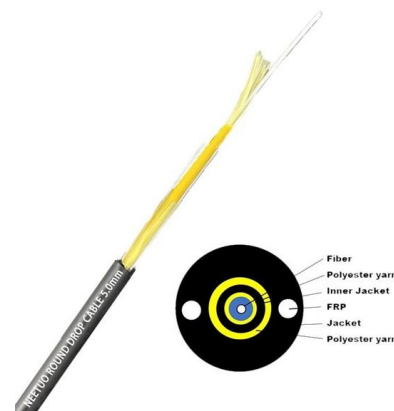
[Contact Us](#)



100g-qsfp28-immersion cooling extender,GIGALIGHT

Immersion cooling extender can also be a important role in liquid immersion solution, existing normal QSFP form transceiver/AOC can be adapted for immersion indirectly. Figure 2.QSFP28 immersion

[Contact Us](#)



Two-Port 40

The design also allows for reach extension between the switch ASIC and the front-port QSFP28, which is often required for the outermost ports of a top-of-rack (ToR) switch or for add-in mezzanine

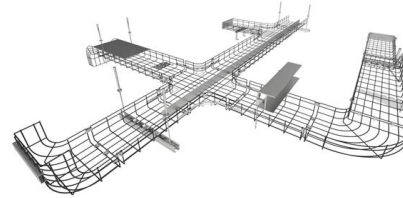
[Contact Us](#)



Juniper EX4650-48Y-AFO 48x 25GB SFP28 8x 100GB

Discover the cutting-edge Juniper EX4650-48Y-AFO switch at NetGenetics . This powerful networking solution features 48x 25GB SFP28 ports and 8x 100GB

[Contact Us](#)



ACX5448, ACX5448-D, and ACX5448-M Universal Metro Routers

QSFP28 ports 36 and 37--Enable the et-0/1/0 interface on port 36. You can configure ports 36 and 37 as native 100-Gigabit or 40-Gigabit Ethernet interfaces, or channelize them into four

[Contact Us](#)

Everything You Need to Know About QSFP28 Ports: Features,

Learn about QSFP28 ports: features, cable options (DAC, AOC, SMF, MMF), interoperability with SFP, and use cases in data centers, AI/HPC and enterprises.

[Contact Us](#)



32QSFP+/20QSFP+ QSFP28 BACK TO FRONT AC

Product Description Juniper Networks QFX Series QFX5110-32Q - switch - 32 ports - managed - rack-mountable Device Type Switch - 32 ports - L3 - managed Enclosure Type Back to front airflow rack

[Contact Us](#)



High-Speed QSFP Loopback Adapter Modules De

How to Choose The Correct QSFP+ or QSFP28 High-Speed Loopback Adapter Module for 40-Gigabit Ethernet or 100-Gigabit Ethernet QSFP

[Contact Us](#)



QFX5200-48Y-DC-AFI 48x 25GB SFP28 6x 100GB

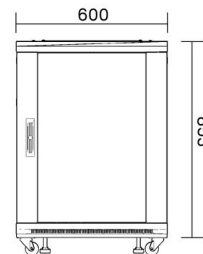
The QFX5200-48Y-DC-AFI is a high-performance switch designed by Juniper Networks, featuring 48 ports supporting 25 Gigabit Ethernet SFP28 connections

[Contact Us](#)

S8550-32C, 32-Port Ethernet L3 Switch, 32 x 100Gb QSFP28,

Der S8550-32C-Switch erfüllt die Anforderungen großer Unternehmens- und HCI-Netzwerke (Hyperkonvergente Infrastruktur) und ist auch ideal für herkömmliche oder vollständig virtualisierte

[Contact Us](#)



Contact Us

For datasheets, pricing, or custom fiber access solutions, please visit:
<https://www.frindel.es>