

Aggregator Rack Switch





Aggregator Rack Switch



Ubiquiti Enterprise Campus Aggregation Rackmount

Teilen Sie uns Ihre Meinung zu Ubiquiti Enterprise Campus Aggregation Rackmount 25G Managed Switch, 48x SFP28, 6x QSFP28 mit oder

[Contact Us](#)

Aggregator for a switch rack system

An aggregator for interconnecting a hydra with an breakout box, said aggregator comprising: (a) a bottom wall, two sides walls, and at least one faceplate; (b) adapters for multi-conductor connectors

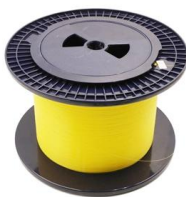
[Contact Us](#)



Aggregation Switches: LANCOM Systems GmbH

Every LANCOM aggregation switch was developed specifically with the aim of reducing operating costs (TCO): all ports are native and conform to industry

[Contact Us](#)



What is an Aggregate Switch?

What is the difference between an aggregate switch and a core switch? An aggregate switch consolidates traffic from access switches, while a core switch forms the backbone of the

[Contact Us](#)



Switch Hi-Capacity Aggregation

A 32-port, Layer 3 switch made for high-capacity 10G SFP+ and 25G SFP28 connections.

[Contact Us](#)



Ubiquiti UniFi Switch USW-Aggregation

UniFi Aggregation Switch is a managed Layer 2 switch with eight 10G SFP+ ports. Featuring a compact 4.7" depth and fanless design, it supports high-bandwidth

[Contact Us](#)



Aggregation switches and routers

A key characteristic of these leaf-spine switching networks is that all leaf switches have full meshed connectivity to the spine switches. Our SDX 8000 Series of

[Contact Us](#)





Aggregation layer , FortiSwitch 7.6.0 , Fortinet Document Library

This is exactly what the FS-2048F provides: 48x 25G SFP28 ports and 8x 100G QSFP28 ports, 4000 Gbps switching capacity in a 1 RU rack-mounted form factor. Having 8x100-GbE ports allows for six

[Contact Us](#)



What Is an Aggregation Switch?

What is the difference between an aggregation switch and a core switch? An aggregation switch consolidates traffic from access switches, while a core switch acts as the backbone of the

[Contact Us](#)

Top of Rack Switch Essentials: Optimize Your Data Center

Learn how to optimize your data center with our top of rack switch essentials. Get expert advice on selecting and buying the right switch for your

[Contact Us](#)



UniFi Aggregation

Form Factor Rack mount (1U) Performance Switching Capacity 160 Gbps Total Non-Blocking Throughput 80 Gbps

[Contact Us](#)



EdgeSwitch Top-of-Rack Aggregation

Distributed Monitoring The EdgeSwitch integrates APCON aggregation and filtering technology on a high density 1RU white box platform, providing distributed access into IntellaFlex XR monitoring

[Contact Us](#)



Aggregators , Keysight

Keysight's iLink Aggregators are cost effective solutions for the tapping and aggregating of traffic to feed to network monitoring or cyber security tools.

[Contact Us](#)

Aggregation switches and routers

The expected growth of gigabit and multigigabit services requires operators to architect network access scalability upfront. For this reason, we have delivered a

[Contact Us](#)



Aggregation Switch , D-Link

Provides advanced Security ACLs for improved security, traffic control, and QoS, ensuring efficient and optimized networking.

[Contact Us](#)



How To Wire a Server and Network Rack , Tips & Best

Network racks are designed to house switches, routers, patch panels, and other structured cabling system local area network (LAN) gear to facilitate

[Contact Us](#)



Standalone AC Solution: Aggregation Switches Function as Gateways

In this example, aggregation switches set up stacks that function as gateways for wired and wireless users on the entire network and are responsible for routing and forwarding of user services.

[Contact Us](#)

Rack Mount Switches Decoded: A Comprehensive

Looking for a rack mount switch? Our ultimate guide is your go-to resource for network professionals. Explore now! #rackmountswitch

[Contact Us](#)



Rack Mount Servers and Switches for Data Centers: A

Rack mount servers and switches are fundamental components within these environments, enabling efficient space utilization, improved cooling, and

[Contact Us](#)



Aggregation Switch

An Aggregation or "Top-of-Rack" switch is designed to connect everything in a rack at high speeds, then have an even bigger pipe out to the rest of the network. The Pro Aggregation does this with it's

[Contact Us](#)



Switch Aggregation

Faster replacement and priority support, covered for 5 years. High-performance 10G SFP modules for optimal connectivity. An 8-port, Layer 2 switch made for 10G SFP+ connections.

[Contact Us](#)



Why You Need a Fiber Aggregation Switch and How it

A: Indeed, certain types of Fiber Aggregation Switches can perform local routing in addition to their primary duty as data aggregators. This is

[Contact Us](#)



Everything You Need to Know About Aggregation Switch

Additionally, their switches provide granular control over the network, allowing administrators to manage the network traffic efficiently. Exploring Other

[Contact Us](#)





What Is an Aggregation Switch and How to Choose?

So, what exactly is an aggregation switch, and how do you choose the right one? Let's examine it in detail.

[Contact Us](#)



What is an Aggregation Switch?

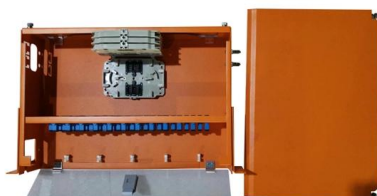
The aggregation switch is located in the middle of the network architecture, which is equivalent to a middle-level manager of a company. It

[Contact Us](#)

Azure Operator Nexus multiple storage appliances

Azure Operator Nexus hardware is organized into compute racks and an aggregator rack. The aggregator rack contains space for two storage appliances. Azure Operator Nexus

[Contact Us](#)



H3C S6530X Series Advanced Aggregation 10GE Switches

H3C S6530X series switches provide industry-leading high performance and scalable aggregation switching solution with modular dual power, fixed uplinks (40GE/100GE) and IRF for resiliency.

[Contact Us](#)



Aggregator Network TAPs , Garland Technology

Fiber Aggregator Network TAPs 1G , Portable
Supports Breakout, Aggregation,
Regeneration/SPAN modes Media conversion: SX
or LX to copper or SFP

[Contact Us](#)



In-depth analysis: What is an aggregation switch?

In many network constructions, we have all heard of switches. So do you really understand switches? Why are aggregation switches often overlooked?

[Contact Us](#)

Contact Us

For datasheets, pricing, or custom fiber access solutions, please visit:
<https://www.frindel.es>