

# **Advantages of Swiss Double- Row Cold Aisle Cabinets**





## Overview

---

Cold aisle containment is less expensive to install as it only requires doors at ends of aisles and baffles or roof over the aisle. However, without a physical barrier, you can still have wrap-around and bypass air, which can result in unacceptably high air temperatures in DCM cabinets with 4' or 6' aisles, and requires a uniform row. To increase the "Energy Efficiency" and manage the "Physical Security & Access Control" in data center environments, KabinPLUS offers Data Center Aisle and Containment Solutions. The accelerated rise of energy consumption in data centers and increasing global energy costs, therefore making energy.



## Advantages of Swiss Double-Row Cold Aisle Cabinets

---



### Server Labs: Data Center Containment System

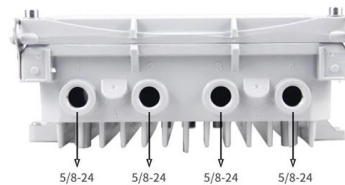
Data Center Containment System We have seen multiple ways to distribute the cold/hot air within the white space area. According to TIA 942-B the "Cabinets

[Contact Us](#)

### FOCUSED COOLING USING COLD AISLE CONTAINMENT

While either hot aisle or cold aisle containment systems can be installed and are both capable of increasing efficiency and cooling today's high heat data centers, meaningful differences exist in how

[Contact Us](#)



### Hot/Cold Aisle Containment , Data Center Containment

Hot and cold air containment systems designed to maximize cooling predictability, capacity, and efficiency at the rack, row or room level. Get flexible and cost

[Contact Us](#)



### IMPROVING DATA CENTER EFFICIENCY AND CAPACITY WITH AISLE

The fundamental difference between Hot Aisle Containment and Cold Aisle Containment is their respective abilities to increase efficiency and capacity in a particular type of data center.



### **What To Know About Hot-Aisle, Cold-Aisle, And Chimney**

The hot-aisle, cold-aisle layout consists of orienting adjacent rows of equipment cabinets in a front-to-front configuration to avoid hot discharge air from one row blowing into the intake of the

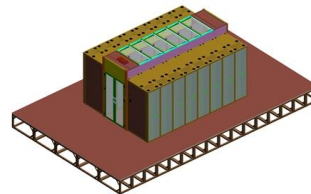
[Contact Us](#)



### **Cold Aisle Containment & Hot Aisle Containment**

customers' minds on cooling in data centres. Data centre cooling and power efficiency is a vast topic, with the pros and cons of different methods continually being debated as chiller and Data Centre

[Contact Us](#)



### **Hot vs Cold Aisle Containment Pros & Cons , AMCO Guide**

Compare hot aisle vs cold aisle containment systems and learn how each approach impacts data center cooling efficiency, airflow management, and infrastructure

[Contact Us](#)



## What are hot and cold aisles in the data center?

Hot and cold aisles in the data center are part of an energy-efficient

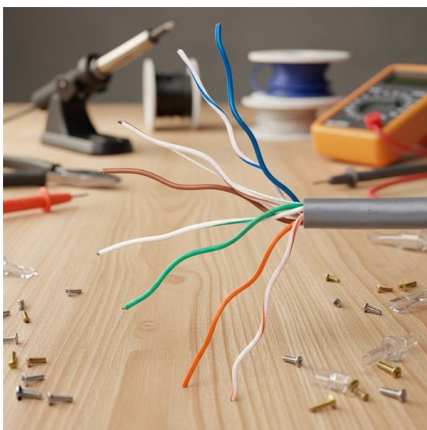
[Contact Us](#)



## How to Choose Between Hot-Aisle & Cold-Aisle Containment in

Historically data center server racks were arranged to reduce the mixing of hot exhaust air with chilled air from cooling units. Aisle containment systems fully isolate either the hot or cold

[Contact Us](#)



## The cold aisle containment advantage

Cold aisle containment The system design fully contains the cold air to the front intake of the racks and prevents mixing with the hot air exhaust. As shown in Figure 2, this approach encloses the ends of

[Contact Us](#)



## Cold Aisle Containment

Retrofitting Cold Aisle Containment System From EDP Europe EDP provides custom Cold Aisle Containment solutions for existing data centres. These solutions are

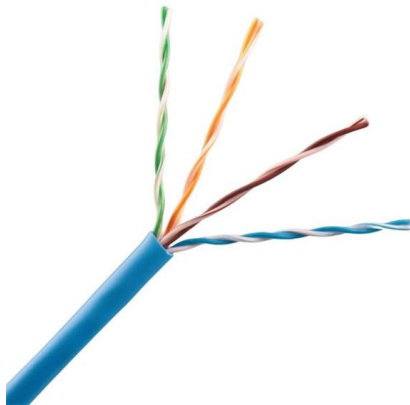
[Contact Us](#)



## KabinPLUS Aisle Containment Solutions

Thanks to the specially designed fixing and flexible plastic isolation elements, the hot aisle chimney can easily be levelled and installed on top of the cabinets ensuring a flexible containment and airflow

[Contact Us](#)



## Data Center Containment Best Practices: Key Considerations to

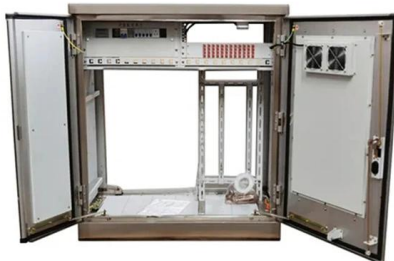
Aisle-end doors are an effective solution that can be applied in singularity and still be extremely effective in reducing IT equipment intake temperatures and creating the opportunity for optimization

[Contact Us](#)

## A Comparative Study: Modular Versus Legacy

Legacy "full" containment is a constructed enclosure encompassing selected cabinet rows or a section of the data center space. AisleLok Modular

[Contact Us](#)



## Aisle Containment Systems Physical Containment Systems

Aisle Containment Systems by Vertiv™ Aisle Containment is the logical extension of the hot aisle/cold aisle concept of data center design.

[Contact Us](#)



## Aisle Containment Systems Physical Containment Systems

Advantages: yy Simple handling of fire suppression devices- extends the cold aisle all the way to the ceiling so any detection or suppression components are automatically included in the aisle space

[Contact Us](#)



## Server Labs: Data Center Containment System

This method encloses the cold aisle with ceiling panels above the aisle between adjoining racks and with doors at the end of the aisle. This allows the cold air

[Contact Us](#)

## The Energy Efficiency Benefits of Cold and Hot Aisle

Hot-aisle containment ensures that the open server room area is colder and provides a more acceptable working environment for technicians and

[Contact Us](#)



## Hot & Cold Aisle Containment Explained , AMCO Guide

Hot and cold aisle containment systems address these challenges through scientifically proven thermal management principles. Alternating Aisles A look at

[Contact Us](#)



## Data Center Hot/Cold Aisle Containment



**Systems , Eaton**

An aisle containment system is a simple way to improve cooling efficiency in hot aisle/cold aisle rack configurations. Essentially creating a room within the aisle,

[Contact Us](#)



### **Basics of Aisle Containment: Exploring Doors, Panels**

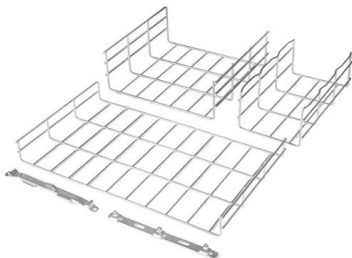
Learn the basics of data center aisle containment & the components of hot & cold-aisle containment systems. Doors, curtains, panels, & more.

[Contact Us](#)

### **Hot Aisle vs. Cold Aisle Containment for Data Centers**

Hot aisle containment and cold aisle containment are effective ways to control temperature and humidity while maximizing efficiency. Which option is

[Contact Us](#)



### **AISLE CONTAINMENT**

Aisle containment in the data center requires that cabinets are aligned in a hot aisle/cold aisle layout. Containment panels or strips create a partition to isolate either the server supply air (cold aisle

[Contact Us](#)



## Hot Aisle Containment vs. Cold Aisle Containment:

In cold aisle containment, the overall data center becomes the hot aisle and that space could be dramatically hot if the theoretical advantages of

[Contact Us](#)



### CABINET COLD AISLE SYSTEM

The cold channel is the front area of the two rows of cabinets, and the hot channel is located at the back of the cabinet. The cabinets are arranged opposite to each other on both sides of the cold channel,

[Contact Us](#)

### Hot and Cold-Aisle Containment - Advantages

Both containment methods can be equally effective, but there are advantages and disadvantages for Hot-Aisle and Cold-Aisle containment. This

[Contact Us](#)



### Aisle Containment Systems , Modular Aisle Containment

This system creates dedicated "hot aisles" where servers release hot air. It also creates "cold aisles" that only contain cold air that gets drawn in by the servers.

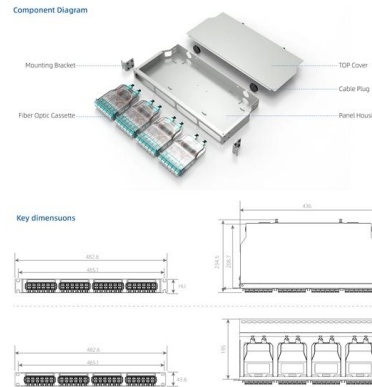
[Contact Us](#)



## Lepin Network , Cold Aisle Containment system

It manages airflow at the source, increases the cooling efficiency and significantly lowers down operating costs. Row level thermal containment improves cooling efficiency and predictability to address zones

[Contact Us](#)



## Impact of Hot and Cold Aisle Containment on Data Center

The containment of hot or cold air in a data center results in the following efficiency benefits. Note that a hot-aisle / cold-aisle row layout<sup>1</sup> is a prerequisite for either type of containment.

[Contact Us](#)

## Effectiveness and Implementation of Modular Containment in

Traditionally the separation of hot and cold air required the implementation of fixed, highly customized hot aisle and cold aisle containment systems. This approach requires detailed engineering plans,



[Contact Us](#)

## Contact Us

---

For datasheets, pricing, or custom fiber access solutions, please visit:  
<https://www.frindel.es>