

Advantages of Integrated Power Supply in Substations





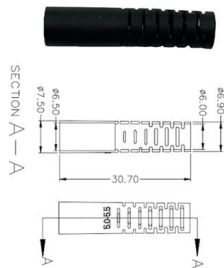
Overview

This paper addresses the problems of low operation efficiency, high human resource consumption and insufficient safety guarantee of the traditional power supply system, and proposes a solution for the integration of AC and DC in intelligent substations, which realizes the integration, intelligence.

Traditional substations are relics of the industrial age – sprawling footprints of copper wire, mechanical switches, and analog gauges requiring on-site teams for basic operations and maintenance. In contrast, intelligent substations' software-based protections eliminate banks of outdated relays. Substations interconnect different voltage levels and are the critical link between transmission, distribution and. John Stevenson, who's pretty much a go-to expert in energy infrastructure, has this to say: "The rise of Combined Substations marks a real turning point in how we handle energy distribution. Essentially, they help us build smarter grids that can handle whatever the future throws at us. Abstract: Substation automation represents a significant advancement in the management and operation of electrical substations, leveraging digital technology, intelligent systems, and communication networks to optimize the performance, reliability, and efficiency of power distribution networks.



Advantages of Integrated Power Supply in Substations



(PDF) Chapter 4: Advantages and Disadvantages of

This paper presents an in-depth comparative analysis of Gas Insulated Switchgear (GIS) and Air-Insulated Substations (AIS), focusing on their

[Contact Us](#)

Increasing Distribution Demands: 5 Benefits of Modular Substations

Today, most power companies around the world are looking to increase capacity of substations or replace them altogether due to growing demand and aging equipment. However,

[Contact Us](#)



Substations & Electrification , Hitachi Energy

Hitachi Energy offers innovative and reliable solutions for effective integration of power from conventional and renewable generation plants globally.

[Contact Us](#)



INTEGRATED SOLUTIONS FOR SUBSTATIONS

IEM Power Systems strengths include the ability to engineer innovative solutions to facilitate our client's needs. Our flexibility to manage changing project requirements combined with the ability to deliver



Transforming Grid Infrastructure: How Intelligent Substations Are

With the rapid growth of data centers, EV adoption, distributed energy resources (DERs), and renewable energy generation, we're witnessing a fundamental shift toward more integrated solutions that

[Contact Us](#)



Distribution Substations

Distribution substation A distribution substation transfers power from the transmission system to the distribution system of an area. The input for a distribution substation is typically at least two

[Contact Us](#)



Hybrid Substation: Revolutionizing Power Distribution Efficiency

Introduction In the rapidly evolving landscape of electrical power distribution, the demand for more efficient, reliable, and compact solutions has never been higher. Among the innovations

[Contact Us](#)





Intelligent Substation Integrated Power Supply Research

The substation power supply system, as a necessary power supply for important power-consuming places such as substations, provides working power for important loads such as control devices,

[Contact Us](#)



Top 10 Benefits of Combined Substations for Efficient Energy

Combined substations play a vital role in modern energy systems, offering numerous advantages for efficient energy management. By integrating various functions into a single

[Contact Us](#)



Distribution Systems, Substations, and Integration of Distributed

This entry describes the major components of the electricity distribution system - the distribution network, substations, and associated electrical equipment and controls - and how

[Contact Us](#)



Grid Communication Technologies

As costs for fiber continue to decrease, application of fiber continues to spread to the last mile. Power line carrier (PLC) is deployed infrequently in the US, although legacy systems can be found in

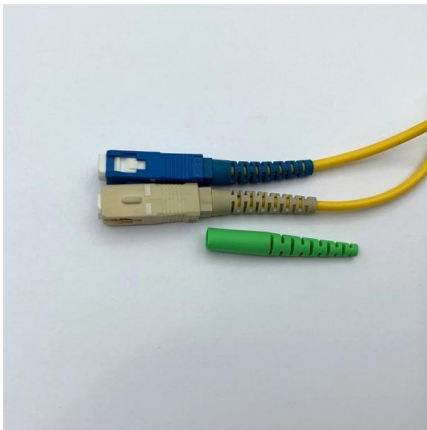
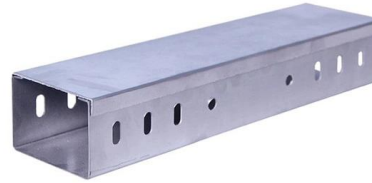
[Contact Us](#)



Layout of Substations , Types, Advantages and

Introduction A substation is a crucial part of an electrical supply system that helps transfer high-voltage electricity from power plants to local areas where it is

[Contact Us](#)



Distribution Systems, Substations, and Integration of Distributed

This entry describes the major components of the electricity distribution system - the distribution network, substations, and associated electrical equipment and controls - and how incorporating

[Contact Us](#)

Power Substation Design: An Overview of One Critical Element of

Power substations play a critical role in the efficient and reliable transmission and distribution of electricity. These vital

[Contact Us](#)



Components and Substations for Electrical Transmission and

For this purpose power transformers form a major component of power substation elements. Another important element is the system of apparatus for energy switching on and off - switchgear and

[Contact Us](#)



Dispatch optimization of multi-station integrated system in 220 kV

The multi-station integrated system (MSIS) integrates traditional substations with renewable sources such as photovoltaics, wind power, energy storage, and electric vehicle (EV)

[Contact Us](#)



State assessment of 110-220 kV intelligent substation

Abstract With the development of modern information technology, intelligent substation technology has been widely used, which greatly promotes

[Contact Us](#)

Chapter 2 Distribution Systems, Substations, and Integration of

Definition of the Subject This entry describes the major components of the electricity distribution system - the distribution network, substations, and associated electrical equipment and controls - and how

[Contact Us](#)



Substation Automation for Sustainable and Resilient Electrical Grids

The benefits of substation automation are multifaceted, including increased reliability, operational efficiency, cost savings, enhanced safety, better data collection, and the ability to support future grid

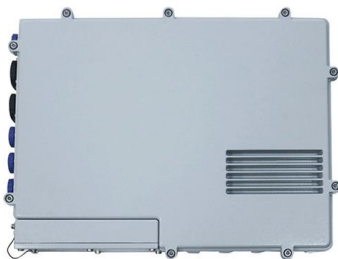
[Contact Us](#)



Intelligent Substation Integrated Power Supply Research

Abstract: As a necessary power source for substations and other important power-using places, substation power supply system provides working power for important loads such as control devices,

[Contact Us](#)



A framework to assess the impacts of digital electrical substations

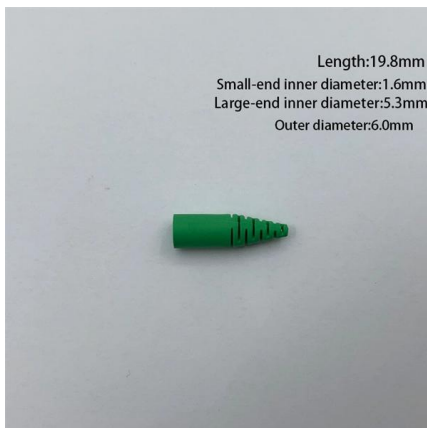
However, methods and tools to analyse the impacts and estimate the benefits of electrical substation digitalisation to support investment decision-making have rarely been reported. We

[Contact Us](#)

Moving from conventional to intelligent substations

With a focus on greener power, improved efficiency and the adoption of smart-grid technologies, utility companies are upgrading from conventional substations to digital substations.

[Contact Us](#)



Substations - Power Grid Integration

Substations are essential components of the grid, allowing power to be safely and effectively transferred at various voltages. An Electrical

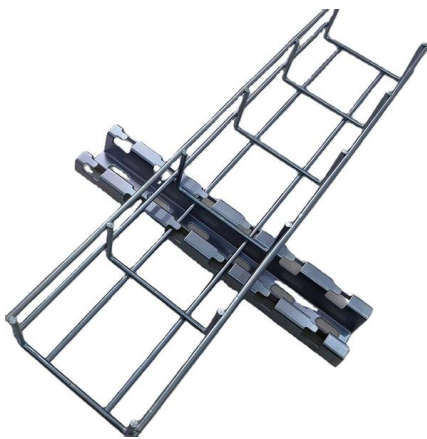
[Contact Us](#)



Successfully Designing Integrated Substations

Distribution of commonly required data, including time synchronization. This concept of station integration has advanced rapidly as IEDs--including protective relays, metering, and monitoring

[Contact Us](#)



Explore the 5 Main Advantages of Digital Substations

How are they different from legacy or conventional substations? Digital substations use sensors and real-time data to support remote monitoring and control, enable digital communication

[Contact Us](#)

A New Type of Intelligent Substation

The more welcomed by the power system construction, the intelligent substation is mainly an intelligent device. Compared to the traditional substations and the old generation of

[Contact Us](#)



Review on key technologies and typical applications of multi-station

To realize the low-carbon development of power systems, digital transformation, and power marketization reform, the substation, data center, energy storage, photovoltaic, and charging

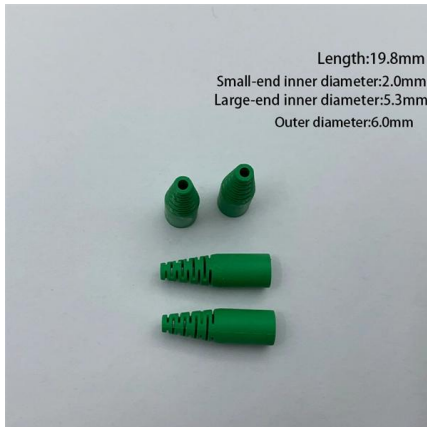
[Contact Us](#)



Research on Technical Scheme of Intelligent Substation and

With the development of society, electricity consumption has surged, which has had a huge impact on the traditional power grid. Intelligent substations play a crucial role in the smart grid, mainly serving

[Contact Us](#)



Focus creates quality products



Review on Functional Architecture and Key Technologies of Intelligent

Intelligent substation is the key link of building Strong-Smart Grid and power Internet of Things. The key architectural composition of intelligent substation, the structure of the perception layer and the upper

[Contact Us](#)

Contact Us

For datasheets, pricing, or custom fiber access solutions, please visit:
<https://www.frindel.es>