

8-core central loose tube optical cable





8-core central loose tube optical cable



8 Core GYXTW Fiber Optic Cable Unitube Light

GYXTW is a central loose tube outdoor optical cable structure that includes steel wire and corrugated steel tape armoring for protection against moisture, rodents,

[Contact Us](#)

Fibre Cable 8 Core Loose Tube Multi-mode 50/125 OM4

An array of fibre and gel filled tubes surround a central strength member, layered with E-Glass yarn and an outer jacket. Our Loose Tube cables are very easy to

[Contact Us](#)



Connectix 002-005-014-08LS 8-Core CST Armoured

The fibre cable has excellent tensile strength and crush resistance characteristics and is also rodent proof. The cable consists of a central jelly filled green polyester

[Contact Us](#)

PE Jacket GYXTW 8 Core Central Loose Tube Outdoor

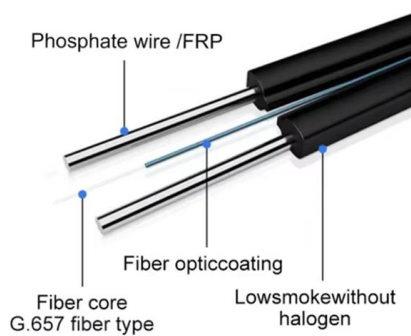
GYXTW 8 Core Single Mode Central Loose Tube Outdoor Aerial and Duct Fiber Optic Cable
Description These central loose tube optical fiber ribbon cables are



Central Loose Tube Cable

Central loose tube cable contains one tube with 2 - 24 fibers, which is filled with water blocking gel. Either aramid yarn or fiber glass is wound around the tube to

[Contact Us](#)



Central Loose Tube Fiber Cable

Universal (Indoor/Outdoor) optical fiber Central Loose Tube (jelly filled tube) cable with aramid yarns as flexible non-metallic strength member, Corrugated Steel Tape armor and flame retardant LSZH

[Contact Us](#)



Central Loose Tube Fiber Cable

Universal (Indoor/Outdoor) Gel filled tubes (4F/T), Gel filled core, optical fiber Multi Loose Tube cable with Polyethylene inner jacket (black), Corrugated Steel Tape armor and Low Smoke Zero Halogen

[Contact Us](#)





OS2 Single Mode Fibre 9/125 LSZH 8 Core Loose Tube CST Armoured Cable

The Starlight Uni Tube Steel Tape Armoured Single Mode OS2 Fibre Cable is suitable for installation in the most demanding, harsh environments. The fibre cable has excellent tensile strength and crush

[Contact Us](#)



Enbeam OS2 Singlemode 9/125 8 Core Armoured CST Fibre Optic Cable Loose

Product Overview Excel corrugated steel tape (CST) OS2 9/125µm armoured loose tube optical fibre cables have been designed specifically for applications requiring a high degree of mechanical

[Contact Us](#)

8 Core GYXTC8Y Self-Supporting Fiber Optic Cable

8 Core GYXTC8Y Central Loose Tube Figure 8 Self-Supporting Aerial Outdoor Single Jacket Steel Wire Strength Fiber Optic Cable, suitable for installation in

[Contact Us](#)



8-Core Multimode 50/125 Om2 Central-Loose-Tube

8 Fibers Multimode 50/125 OM2, FRP Strength Member, Central Loose Tube, LSZH Outdoor FTTH Drop Cable. The fibers are positioned into a

[Contact Us](#)





Loose Tube Outdoor Cable OS2, 8-Core, SC/UPC

High-quality SC-SC single-mode (mono-mode) Loose Tube installation outdoor cable for laying in a tube above- or underground. Black multi-purpose cable with eight cores, rodent protection and pulling aid

[Contact Us](#)



CentraLink CD and Central Loose Tube

1.0 Product Applications The instructions in this document explain how to prepare end and mid-span openings of the Prysmian central loose tube fiber optic cable designs for termination. The document

[Contact Us](#)



8 Core GYXTC8Y Self-Supporting Fiber Optic Cable

8 Core GYXTC8Y Central Loose Tube Figure 8 Self-Supporting Aerial Outdoor

[Contact Us](#)



Network Cabinet & Rack



Enbeam OM4 Multimode Armoured CST Fibre Optic Cable Loose

These compact, lightweight cables are extremely rugged, provide rodent resistance and are quick and easy to install. The cables are constructed around a silica gel filled tube(s) containing up to 24 colour

[Contact Us](#)



Central Loose Tube Fiber Cable

CPR Dca. Universal (Indoor/Outdoor) optical fiber Central Loose Tube (jelly filled tube) cable with glass yarns (standard rodent protection) as strength member and Low Smoke Zero Halogen outer jacket.

[Contact Us](#)



Indoor-Outdoor Structured Fiber Optic Cable solutions

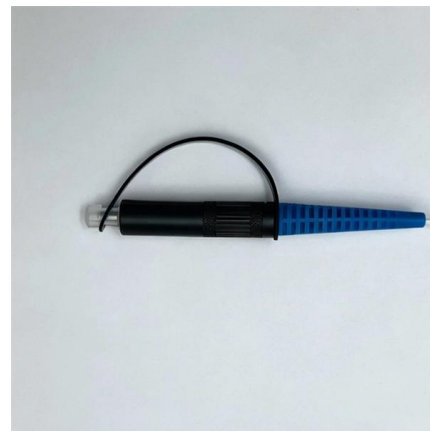
Exceptional mechanical and environmental performance are the hallmark of this cable family. Indoor-Outdoor Loose-Tube cable combines Dry-Core technology

[Contact Us](#)

Central Loose Tube Fiber Cable

Universal (Indoor/Outdoor) dry core optical fiber Multi Loose Tube cable with glass yarns as strength member and Low Smoke Zero Halogen outer jacket. Product feature: This cable has rodent

[Contact Us](#)



Armoured OM3 8 core Optical Fibre Cable

8 core OM3 multimode loose tube Optical fibre cable with corrugated steel tape armour LSZH outer jacket. For internal or external use. Cut to order per metre.

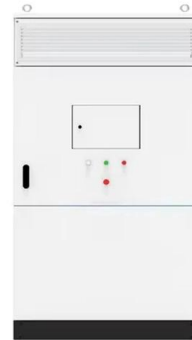
[Contact Us](#)



Infinique Central Loose Tube 8 Core Multimode OM3 Cable

Infinique Central Loose Tube Cables are suitable for both indoor and outdoor applications. They are designed not just to save space and time but also to further simplify fiber management by eliminating

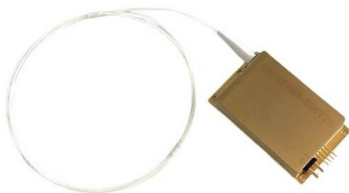
[Contact Us](#)



Central Loose Tube Cable

Datasheet Infinique's Central Loose Tube Cables are suitable for both indoor and outdoor applications. They are designed not just to save space and time but also to further simplify fiber management by

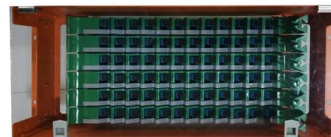
[Contact Us](#)



Central Loose Tube Fiber Cable

Outdoor optical fiber Central Loose Tube (jelly filled tube) cable with glass yarns (improved rodent protection) as strength member and polyethylene outer jacket. Product feature: This cable has

[Contact Us](#)



GYXTC8S Figure 8 self-supporting Center Tube Optical

GYXTC8S fiber optic cable is a figure 8 structure cable suitable for installation in the aerial environment for long haul communications.

[Contact Us](#)





8 core singlemode loose tube cable LSZH int/ext, Fibre Optic Cable

These Optical fibre cables meet both Internal and External Environmental and flame-retardant industry standards with 48F-288F cabling options. The simple mechanical construction of the Loose tube

[Contact Us](#)

MORE CASES PRESENTATIONS



Central Loose Tube Fiber Cable

CPR Dca. Universal (Indoor/Outdoor) optical fiber Central Loose Tube (jelly filled tube) cable with glass yarns as strength member, Corrugated Steel Tape (Full Rodent Protected) armor and Low Smoke

[Contact Us](#)

Fibre Cable 8 Core Loose Tube Multi-mode 50/125 OM3

Fibre Cable 8 Core Loose Tube Multi-mode 5/125 OM3 Best suited to external or duct environments where the construction provides protection from the ingress of water. Available in two formats;

[Contact Us](#)



OM3 Multimode Fibre LSZH 8 Core Loose Tube CST

The fibre cable has excellent tensile strength and crush resistance characteristics and is also rodent proof. The cable consists of a central jelly filled green polyester

[Contact Us](#)



Contact Us

For datasheets, pricing, or custom fiber access solutions, please visit:
<https://www.frindel.es>