

600 Cable Tray Support





Overview

The 600mm double tier trapeze bracket is a prefabricated, ready-to-use support system designed to securely hold cable trays and ladder systems up to 600mm wide. With a 500mm drop length, it provides reliable suspension while reducing on-site installation time and costs. With our many years of experience, we are one of the leading manufacturers in this field. 600mm Cable Tray Trapeze Support Bracket Kit (Pre-Galvanized) - 500mm Drop - PLEASE NOTE TRAPEZE BRACKETS ARE NON REFUNDABLE Streamline your cable management installation with our 600mm Cable Tray Trapeze Support Bracket Kit, designed for easy on-site assembly. Designed for the installation of light, medium & heavy duty cable tray and features captive nuts to dramatically reduce installation time. Produced to comply with the requirements of BS6946 Metal Channel Support Systems.



600 Cable Tray Support



600mm Double Tier Trapeze Bracket - Cable Tray Support

The 600mm double tier trapeze bracket is a prefabricated, ready-to-use support system designed to securely hold cable trays and ladder systems up to 600mm

[Contact Us](#)



Cable Tray Ladder Trunking Wire Basket Installation

Resources For Electrical & Electronic Engineers
Cable Tray Ladder Trunking Wire Basket
Installation Guidelines What Are Cable Trays? An assembly of

Top 7 Types of Cable Trays and Their Applications

Introduction A cable tray system is an essential part of modern electrical installations, designed to support, protect, and organize electrical cables

[Contact Us](#)



Cablofil PA4 Electro-Zinc Steel Wire Cable Tray 105mm Radius Support

Radius support connector for wire cable trays. Forms secure horizontal hinged joints for 100 to 600 mm tray widths. Electro-zinc plated steel delivers corrosion resistance and durable performance in cable

[Contact Us](#)



Cablofil Electro-Zinc Steel Cable Tray Radius Support 150mm

Electro-zinc steel radius support for wire mesh cable trays, enabling horizontal hinged direction changes. Compatible with 100-600 mm trays with 50 mm side height for controlled cable routing.

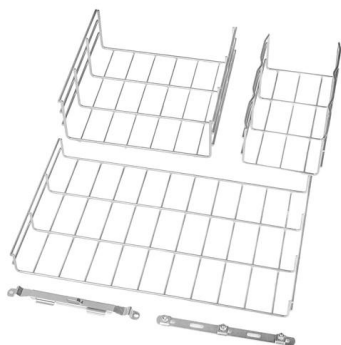
[Contact Us](#)

Cablofil ED275GC Hot Dip Galvanised Steel Wire Cable Tray Long

Overview Cablofil ED275GC Long Joint Strip is a steel connector designed for secure longitudinal joining of wire mesh cable trays. The horizontal hinged joint supports installation flexibility and is compatible



[Contact Us](#)



Cablofil EZT90EZ Electro-Zinc Steel Wire Cable Tray 90° Angle Support

90° angle support connector for wire cable trays. Forms secure horizontal hinged joints for 50 to 600 mm tray widths. Electro-zinc plated steel provides corrosion resistance and durable performance.

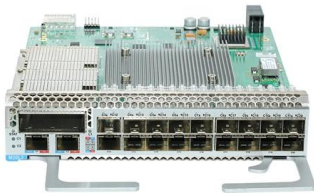
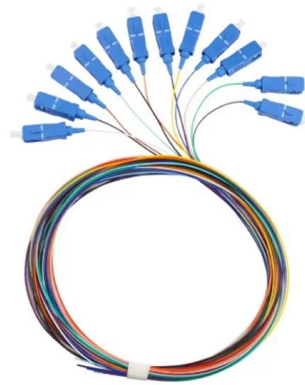
[Contact Us](#)



600mm Double Tier Trapeze Bracket - Cable Tray Support

600mm Cable Tray / Ladder Double Tier Trapeze Support - Pre-Galvanised Steel The 600mm double tier trapeze bracket is a prefabricated, ready-to-use support

[Contact Us](#)



Cable Tray Trapeze Support Bracket

Perfect for supporting cable trays, and can also be used for ladder installations when paired with the appropriate hold-down bracket. Comprehensive Kit: This all-in-one

[Contact Us](#)

Cablofil UDO24KITEZ Electro Zinc Steel Cable Tray Universal

Electro-zinc steel universal dropout for 600 mm wide wire mesh cable trays. Curved design maintains bend radius and allows tool-free cable exit without cutting the tray. Supplied as a complete kit.

[Contact Us](#)



Cablofil ED25090EZ Electro Zinc Steel Wire Cable Tray Angle Joint

The hinged joint allows flexible adjustment during installation and is compatible with tray widths from 50 to 600 mm. Manufactured from electro zinc plated steel, it offers corrosion resistance, halogen-free

[Contact Us](#)



Guide to cable support systems

The load capacity of the cable trays according to the support width can be read off in the diagram using load curves - here, shown as an example for a cable tray with the tray widths 100 to 600 mm.

[Contact Us](#)



Cablofil Hot Dip Galvanised Steel Wire Cable Tray Support Rail 600mm

Can be used for floor, wall and trapeze mounting. For trapeze mounting, add 100 mm to width of tray to order correct size support rail - eg. for 100 mm tray order RCSN200 (Cat. Nos. CM013200 /

[Contact Us](#)



Cable Tray, Cable Bus, Wire Mesh Cable Trays , MP

MP Husky manufacturers Cable Tray Systems, Cable Bus System, Wire Mesh/Wire,Cable Tray, & Cable Management Systems. Our cable support

[Contact Us](#)



Cablofil Pre-Galvanised Steel Wire Cable Tray Support Rail 600mm

Pre-galvanised steel S-profile support rail for wire cable tray mounting. Back perforated to allow flexible fixing with 1 kN load capacity.

[Contact Us](#)





Cable Tray Trapeze Support Bracket

This kit offers all the essential components needed to build a robust

[Contact Us](#)



600mm Stand Off Bracket / Cable Tray Hanger

Stand Off bracket can be used to support and secure all three types of cable tray as well as basket tray. Fit vertical or horizontal runs of cable tray to vertical surfaces

[Contact Us](#)

CABLE TRAY SUPPORT SYSTEM 600 X 600 MM WITH SLOTTED

CABLE TRAY SUPPORT SYSTEM 600 X 600 MM WITH SLOTTED STRINGER The uniquely designed slotted stringer is used to mount, support, and connect lightweight structural loads for supporting

[Contact Us](#)



600mm Cable Tray, 600mm Ladder Cable Tray

Introducing the high-capacity 600mm cable tray from NewReach, designed to handle a large volume of cables effortlessly. This tray is ideal for high-density cabling

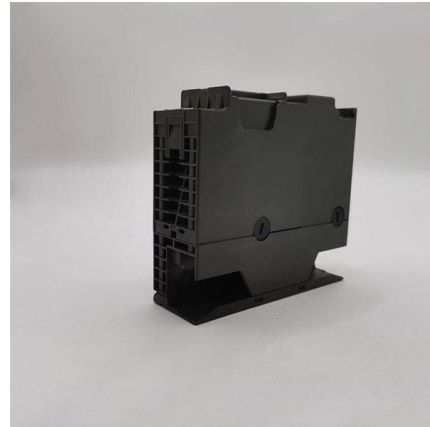
[Contact Us](#)



600mm Stand Off Bracket c/w Cage Nuts

Designed for the installation of light, medium & heavy duty cable tray and features captive nuts to dramatically reduce installation time. Produced to comply with the

[Contact Us](#)



Cablofil ED275S6 316L Stainless Steel Wire Cable Tray Long Joint

316L stainless steel long joint strip for secure longitudinal joining of wire mesh cable trays. Hinged joint supports installation flexibility for 50-600 mm trays, delivering high corrosion resistance and halogen

[Contact Us](#)

Cablofil FASLOCKXLS6 316L Stainless Steel Wire Cable Tray Bend

316L stainless steel bend connector for rapid joining of wire mesh cable trays. Horizontal hinged joint supports flexible routing for 300-600 mm trays, delivering high corrosion resistance and halogen free

[Contact Us](#)



Cable tray LKS 60 FS RU 400

Find out more about Cable tray LKS 60 FS RU 400 - 600 mm perforated 3000 , 400 , 0.9 , no , Steel , Strip galvanised now! OBO - your provider for Cable support systems.

[Contact Us](#)



Cablofil CEFASDC Hot Dip Galvanised Steel Cable Tray Base Coupler

Zinc coated steel base coupler for fast, screwless longitudinal joining of wire mesh cable trays. Supports 100-600 mm tray widths and enables accurate horizontal alignment in industrial cable support systems.

[Contact Us](#)



Cable Tray Manufacturer and Accessories in Pakistan

Ladder Cable Tray Manufacturers and Supplier in Pakistan Al Fazal Engineering guarantee your significant cost saving as compared to the other traditional Cable

[Contact Us](#)

Cable Tray Systems

Cable trays offer continuous support of cables, are lightweight, quick and straight forward to install just about anywhere, and generally mean that changing cabling services over the lifetime of a project is

[Contact Us](#)



Contact Us

For datasheets, pricing, or custom fiber access solutions, please visit:
<https://www.frindel.es>