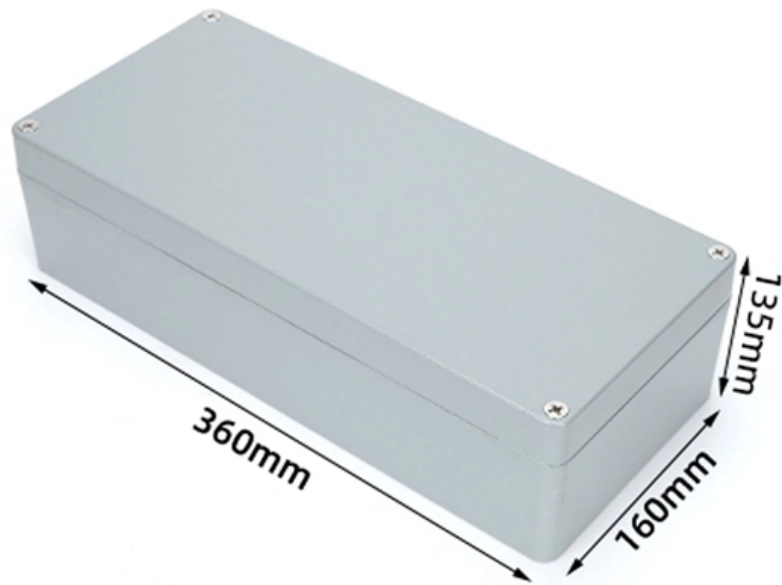


6-Port Optical Industrial Switch





6-Port Optical Industrial Switch

Gigabit 6-port industrial Ethernet switch



Unmanaged industrial Ethernet fiber switch with 4*10/100/1000M RJ45 ports and 2*1000M SFP fiber ports. It can support dual DC power input and DIN rail

[Contact Us](#)

RS PRO 2727653 Unmanaged Industrial Ethernet Switch 6 x10/100

RS PRO Managed 8 Port Ethernet Switch, RJ-45 This RS PRO Managed Industrial Ethernet Switch is a highly reliable managed industrial Ethernet Switch with 4-port 10/100/1000-T RJ45 and 2-port



[Contact Us](#)



Gigabit 6-port L2+ managed industrial PoE switch

L2+ managed industrial PoE fiber switch with 4*10/100/1000M RJ45 ports and 2*100/1000M uplink SFP fiber ports. Port 1-4 can support IEEE802.3af/at PoE

[Contact Us](#)

6 ports network switch, 6 ports ethernet switch

Find your 6 ports network switch easily amongst the 109 products from the leading brands (Emerson, ASCON, MOXA,) on DirectIndustry, the industry specialist



Sixnet® SL-6ES-5ST Unmanaged 6-port Industrial Ethernet Switch

The Sixnet® 6-port Unmanaged Industrial Ethernet Switch is plug and play to help you save time and reduce costs. Ruggedized design is engineered to last and offers superior performance in industrial

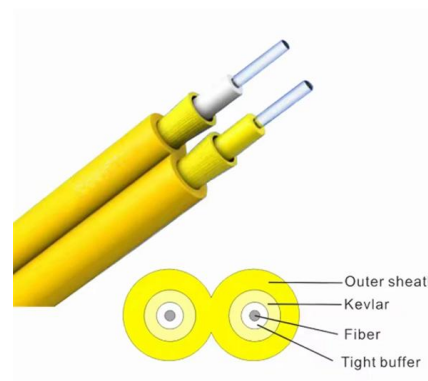
[Contact Us](#)



6-Port Fiber Optic Industrial Ethernet Switch

The TC3715 10/100 6-Port Ethernet Switch is a low cost, flexible bandwidth solution for high traffic industrial and commercial fiber optic networks.

[Contact Us](#)



6 Port Unmanaged Industrial Gigabit Ethernet Switch w/

6 Port Unmanaged Industrial Gigabit Ethernet Switch w/ 4 PoE+ Ports and Voltage Regulation - DIN Rail / Wall-Mountable Learn why IT Pros trust StarTech for

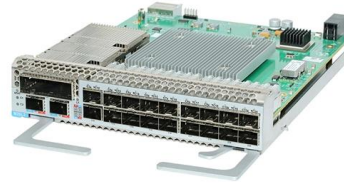
[Contact Us](#)



6 Port Unmanaged Ethernet Switch

Get the Versitron 6 Port Fiber Optic Switch with 4 RJ45 connectors and 2 SFP fiber module slots that support various cable types for your network.

[Contact Us](#)



Gigabit 6-port industrial PoE switch

Unmanaged industrial PoE switch with 4*10/100/1000M RJ45 ports and 2*1000M uplink SFP fiber ports. Port 1-4 can support IEEE 802.3af/at PoE standard. It can

[Contact Us](#)



6-Port Industrial Switches / COME-STAR Communication

Come-Star offers a selection of 6-port industrial Ethernet switches, designed for reliable performance in demanding industrial settings. Our 6-port rugged switches provide robust connectivity and durability,

[Contact Us](#)



- IP65/IP55 OUTDOOR CABINET
- ALUMINUM
- OUTDOOR ENERGY STORAGE CABINET
- OUTDOOR EQUIPMENT CABINET

Managed 6 Port Industrial Gigabit Fiber Switch , IDS-206 , Perle

The IDS-206 is a 6 port Managed Ethernet Switch that can operate in industrial environments providing advanced performance and enabling real-time deterministic network operation.

[Contact Us](#)



Gigabit 6-port L2+ managed industrial PoE switch

L2+ managed industrial PoE fiber switch with 4*10/100/1000M RJ45 ports and 2*100/1000M uplink SFP fiber ports. Port 1-4 can support IEEE 802.3 af/at PoE

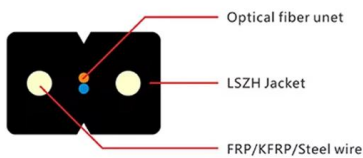
[Contact Us](#)



6 Port 10/100/1000 Ethernet Switch - 4 Copper Ports with 2 SFP Optical

FiberPlex Technologies TIS-8632 is a powerful 6 Port 10/100/1000 Ethernet Switch. The unit features (4) RJ-45 UTP ports as well as (2) flexible SFP ports

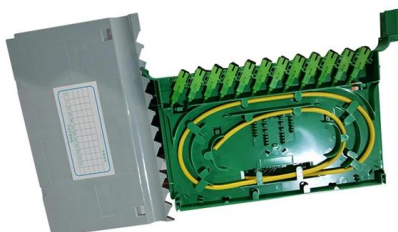
[Contact Us](#)



6-port Gigabit Intelligent Industrial PoE Switch - PoE 120W

The Ernitec 6-port 1000Mbps Intelligent Industrial PoE Switch is designed for high-performance and reliability in industrial settings. Here are some key features:

[Contact Us](#)



Industrial Network Switches , Industrial Ethernet

Industrial network switches operate in rugged environments & high temperatures. Use our trusted hardened ethernet switches to strengthen network security.

[Contact Us](#)



6-Port Hardened Industrial Gigabit PoE+ DIN-Rail Fiber Network

The industrial switch's 4KV power port surge protection and 2KV network port surge protection can adapt to harsh outdoor environments and ensure the reliability of the uninterrupted network system.

[Contact Us](#)



6-Port Unmanaged Industrial Switch

VERSITRON's SF70660 unmanaged 6-port industrial Ethernet switch includes four 10/100/1000Mbps RJ45 ports and two 100/1000M SFP fiber uplink ports that

[Contact Us](#)

6-Port Unmanaged Ethernet Switch / Daisy-Chain and

The USW-1206-FO (SM/SC) is a rugged, fan-less, industrial-grade, 6-port unmanaged 10/100M Ethernet switch and fiber optic media converter that

[Contact Us](#)



COMFRONT Industrial 6-Port Unmanaged Ethernet

Product Description The USW-1206-FO (MM/ST) is a rugged, fanless, industrial-grade, unmanaged 10/100M Ethernet switch and fiber optic media converter that

[Contact Us](#)



Sixnet® SLX-6RS-4ST-D1 Managed 6-port Industrial Ethernet Switch

Item number SLX-6RS-4ST-D1 The Sixnet® 6-port Managed Industrial Ethernet Switch enables fast Ethernet connectivity for industrial equipment in extreme industrial settings. Rugged and high

[Contact Us](#)



INet6+PoE 6-port Gigabit Ethernet switch

INet6 + is a secure 6-port manageable industrial Gigabit Ethernet switch: This product allows to build an optical chain or ring network (depending on the network)

[Contact Us](#)



6 Port Managed Switch , 6 Port Network Switch

VERSITRON's SG70660M 6-port managed switch includes 5 auto-negotiating RJ45 ports that support 10/100/1000Mbps, and 1 1000Base SFP port for fiber optic

[Contact Us](#)



Gigabit 6-port L2+ managed industrial Ethernet switch

L2+ managed industrial Ethernet fiber switch with 4*10/100/1000M RJ45 ports and 2*100/1000M uplink SFP fiber ports. It can support dual DC power supply input

[Contact Us](#)



Sixnet® SLX-6ES-5SCL Unmanaged 6-port Industrial

The Sixnet® 6-port Unmanaged Industrial Ethernet Switch is plug and play to help you save time and reduce costs. Ruggedized, hardened design is engineered to

[Contact Us](#)



Contact Us

For datasheets, pricing, or custom fiber access solutions, please visit:
<https://www.frindel.es>