

# **48-port patch panel cable organizer**





## 48-port patch panel cable organizer

---



### **Cable Matters UL Listed Rackmount or Wall Mount 48**

Heavy Duty 48-Port Patch Panel: This robust 48 port Cat6 patch panel supports high-speed Ethernet networks, designed for Cat6 cabling, but also backwards

[Contact Us](#)

### **Cable Matters Rackmount or Wall Mount 2U 48 Port**

Rack Mount Patch Panel or Wall Mount Ready: The 2U patch panel 48 port format fits universally in standard 19-inch network racks, server cabinets, or patch panel

[Contact Us](#)



### **[UL Listed] Rackmount or Wallmount 48-Port Cat6 RJ45**

Cable Matters 48-Port Cat6 RJ45 Patch Panel future-proofs your network connection for 10-Gigabit Ethernet.

[Contact Us](#)

### **Network Cable Management , 1U & 2U Cable Managers**

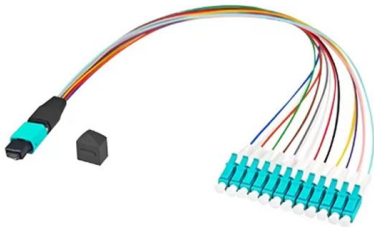
Neat-Patch network cable management solutions are engineered for high-density IT racks using 24-48 patch cables. Our 1U and 2U cable managers reduce slack,



### 48 patch panel , Newegg

TRENDnet 48-Port Cat5/5e Unshielded Patch Panel, TC-P48C5E, 2U 19 inch Rackmount Design or Wall Mount, Cable Management, NDAA Compliant, 48 x Gigabit RJ-45 Ports Model #:

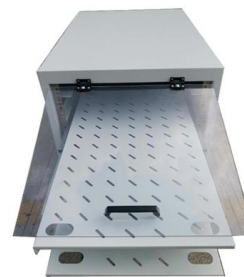
[Contact Us](#)



### 48-Port 2U Rackmount Cat6 Patch Panel, RJ45, UTP,

HIGH-DENSITY CONNECTIVITY: 48-Port UTP Cat6 Patch Panel offers a structured cabling solution with clearly labeled ports for organized, high-performance

[Contact Us](#)



### 48 port keystone patch panel , Newegg

Search Newegg for 48 port keystone patch panel. Get fast shipping and top-rated customer service.

[Contact Us](#)





### **Cat6 High Density Coupler Patch Panel, 48-Port, 1RU,**

It is a piece of hardware which includes multiple ports that can help you organize

[Contact Us](#)



### **PATCH PANEL 48 PORT 1U 19" CAT.6A FTP WITH**

Patch panel 48 port 1U 19" CAT.6A FTP shielded Lanberg is a professional ICT tool, ideal for use in main and intermediate distribution points in high-speed ICT

[Contact Us](#)



### **48 Port Patch Panel AE-PP648 for Efficient Network**

Explore AE-PP648 48 Port Patch Panel for seamless cable management and high-performance network setups. Ideal for large-scale network configurations.

[Contact Us](#)



### **[UL Listed] Cable Matters 48 Port Patch Panel**

Built for Future-Proof Speed and Reliable Connectivity The Cable Matters 48-Port RJ45 Patch Panel with Support Bar future-proofs your network connection for 10

[Contact Us](#)





### **Rack or Wall Mount 48-Port Blank Patch Panel**

High-Density 48 Port Patch Panel Design: This keystone patch panel 48 port is

[Contact Us](#)



### **Patch Panels: A Complete Guide**

Patch panels are one of the best ways to manage an expansive local area network (LAN) by providing quick and easy access to the ports and

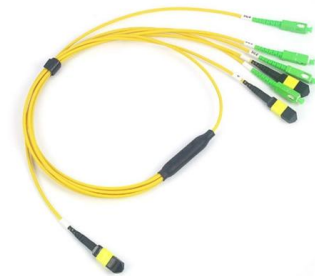
[Contact Us](#)



### **patch panel 48 port , Newegg**

Search Newegg for patch panel 48 port. Get fast shipping and top-rated customer service.

[Contact Us](#)



### **Signamax High-Density 48 Port Unshielded Patch Panels**

These compact patch panels fit 48 keystone jacks into only 1 rack mount space, and with the included cable management bar, you no longer have to sacrifice panel or

[Contact Us](#)

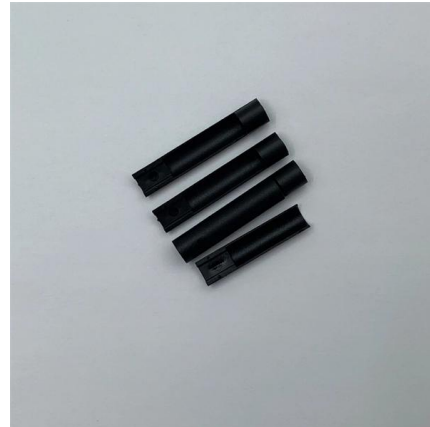




### 48-Port 1U Rack-Mount Cat6 Cat5 110 Patch Panel,

Manage and organize your Cat6 input and output cable connections with this 110 punch-down patch panel with 48 RJ45 ports in just 2U of rack space.

[Contact Us](#)



### Patch Panel 48 ports with cable managers

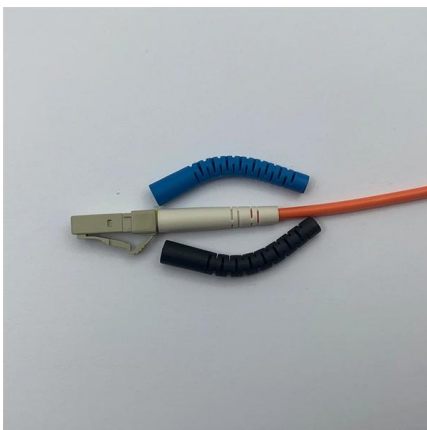
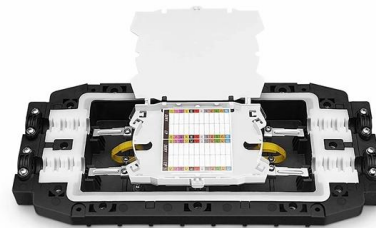
Supplied with two metal cable managers, two sets of nylon ties, and 48 plastic

[Contact Us](#)

### Types of RJ45 Patch Panels: How to Select the Suitable

And the configurations can also be different from numbers of ports, such as 12-port, 24-port, 48-port patch panel, etc. So how to select the most

[Contact Us](#)



### Patch Panels

The Elite press-fit Cat6 Patch Panel 48 port is a high-performance solution for connecting hardware transmission. It is fully RoHS compliant and requires no

[Contact Us](#)



### **Patch Panel 48 ports with cable managers**

48-Port Monolithic Patch Panel, Cat6, 2U, RJ45, Durable, 200 IDC Re-terminations, Cable Managers Included, ISO/IEC 11801, TIA/EIA-568C Compliant, Ideal for

[Contact Us](#)



### **Signamax High-Density 48 Port Unshielded Patch Panels**

Signamax(TM) line of 48 Port High Density Patch Panels offer installers the ideal solution for applications that are size-restricted or require a large number of patch

[Contact Us](#)

### **Amazon : 48 Port Patch Panel**

Explore versatile 48-port patch panels with cable management features. Available in Cat6, Cat5e, and blank keystone configurations for your network.

[Contact Us](#)



### **PATCH PANEL 48 PORT 1U 19" CAT.6 FTP WITH**

Lanberg 48 port 1U 19" CAT.6 FTP shielded patch panel is a professional ICT tool, ideal for use in main and intermediate distribution points in high-speed ICT

[Contact Us](#)



### **QUICKPORT Patch Panel, 48-Port, 2RU, Cable**

QuickPort Patch Panels are compatible with all QuickPort modular connectors to maximize versatility with a variety of media applications and enable easy

[Contact Us](#)



### **Network Cable Management , 1U & 2U Cable Managers**

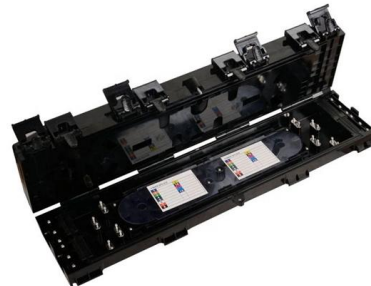
Neat-Patch® 1U and 2U cable managers are designed to support 24-48 port configurations using 2-foot patch cables, but they also provide unparalleled room

[Contact Us](#)

### **Special Cable Organiser 48 Port Patch Panel - Model 01**

Bought to you by Briticom®, these special cable organiser patch panels are highly exclusive with a patented design. Model 01, 48 Ports, has a

[Contact Us](#)



## **Contact Us**

---

For datasheets, pricing, or custom fiber access solutions, please visit:  
<https://www.frindel.es>