

35kV busbar connected to





35kV busbar connected to



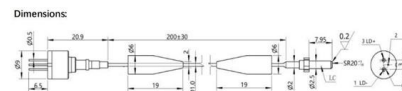
Busbar Connection System Top busbar system (35kV) 35kV SU

Busbar Connection System Top busbar system (35kV) 35kV SU connect Description 35kV top busbar connector used in GIS system switchgear busbar connection system, mainly by the T-joint, cross

[Contact Us](#)

Busbar 101

These pre-configured conductive strips or bars can be connected to create systems of varying length based on the amount of power the control panel requires. Busbar power distribution removes both



[Contact Us](#)



Application Note AN-2201 SCALE-2 Family

Parallel Set-up Consideration for Main and Peripheral SCALE-2 Drivers (a) One Busbar Connecting all IGBTs (b) Ferrite Core Added to Connection Cables with Plastic "L-Stand-of" for Connection Cables

[Contact Us](#)

33kV 4000amp Fully Insulated Duresca Busbar System

33kV 4000amp Fully Insulated Duresca Busbar System Published 03 Mar 2020 Image: Barrie Gray - Offshore Installation Tech at Fabriom Hoboken



Design Guide for bus bars

Minimum mechanical requirements for the connection style chosen must be considered for overall efficiency and cost effectiveness. Grounds The ground

[Contact Us](#)



Design and installation of low voltage busbar trunking

Power is taken from busbar trunking by the use of tap off units which connect at defined positions along the busbar trunking, and allow power to be

[Contact Us](#)



Busbar Design for High-Power SiC Converters

Busbars are critical components that connect high-current and high-voltage subcomponents in high-power converters. This paper reviews the latest

[Contact Us](#)

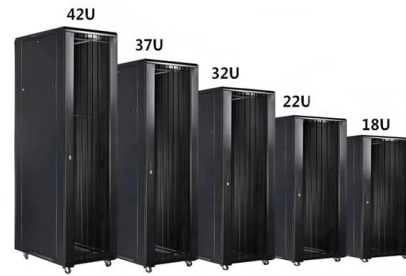




Connecting systems for transformers and GIS

WELCOME! In this first part of the catalog you will find connection solutions from PFISTERER for high and extra high voltage with complementary tools for lifelong high-performance transformers and gas

[Contact Us](#)



Understanding Electrical Busbars: Types and Applications

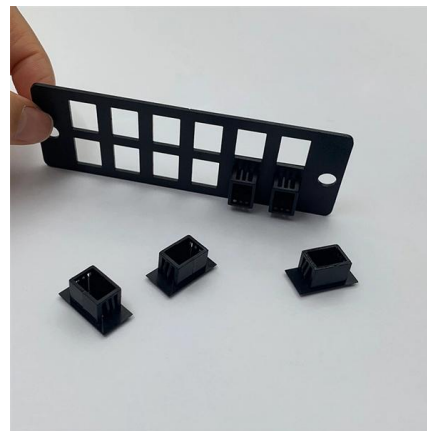
Learn what electrical busbars are, their key types, voltage ranges, and how they improve efficiency and safety in modern power distribution systems.

[Contact Us](#)

IEC 61439 Busbar Standard: A Guide to Low-Voltage

Figure 1: Busbar Standard Scope of IEC 61439
The IEC 61439 standard applies to busbar assemblies that will be installed in electrical

[Contact Us](#)



Copper for Busbars - Guidance for Design and Installation

For busbar systems, the maximum working current is determined primarily by the maximum tolerable working temperature, which is, in turn,

[Contact Us](#)



Bus Protection Theory

However, a specific busbar may have multiple bus segments, with individual circuits that connect to different bus segments depending on operating needs. For such complex buses, busbar protection

[Contact Us](#)



Types 8DA10 and 8DB10 up to 40.5 kV

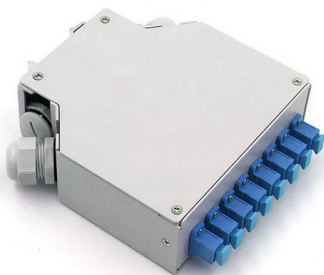
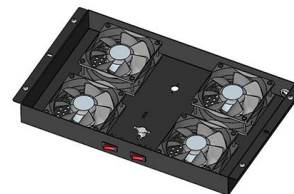
Medium-voltage switchgear 8DA/B is indoor, factory-assembled, type-tested, single-pole metal-enclosed, gas-insulated switchgear, for single-busbar and double-busbar applications, as well as for

[Contact Us](#)

35KV heat shrink bus bar tubing BH-BBT-35KV

BH-BBT-35KV 35KV heat shrink bus bar tubing provides high resistance to tracking and arcing and used to enhance the insulation properties of bus bar in

[Contact Us](#)



What is a Busbar? A Detailed Guide

Busbars essentially serve as electrical highways, guaranteeing that power is delivered effectively and safely to where it is required. Connecting many

[Contact Us](#)



Busbar Connection System Top busbar system (35kV) 35kV SU

35kV top busbar connector used in GIS system switchgear busbar connection system, mainly by the T-joint, cross connector, shield bus composition, to achieve the switchgear of the insulated, fully

[Contact Us](#)



35kV Distribution Line Single-Phase Ground Fault Handling

On the same voltage-level busbar, multiple distribution lines (for input or output) are connected, each with numerous branches arranged radially and linked to distribution transformers.

[Contact Us](#)

35kV Substation Electrical Design , PDF , Transformer

This document is a graduation thesis on the electrical primary design of a 35kV substation. It includes an abstract that outlines the design of a 35kV substation

[Contact Us](#)



073131

It can be connected to either bus through disconnect switches. This configuration was used extensively at PG& E until approximately 2002 for 115kV and 230kV transmission substations.

[Contact Us](#)



35kV Cable Bus Application , Eng-Tips

Anyone have any experience with using cable bus for 35kV applications with short distances? I'm looking at a preliminary design which uses (6) sets of

[Contact Us](#)



BUSBAR PROTECTION

The busbar protection should be able to correctly detect a fault condition occurring during an on-load busbar changeover and issue trip commands to the connected bays.

[Contact Us](#)



HA-26-41-8BT2-EN.pdf

Connection from front Connection from front or rear (for free-standing arrangement) Interlocked high-voltage door and bolted partitions between cable compartment and switching-device compartment

[Contact Us](#)



Busbars and Connectors in HV and EHV installations

Learn about materials, connection methods, thermal management, and their vital role in power distribution for industrial and data center applications.

[Contact Us](#)



35kV F Busbar system

Suitable for the high voltage electrical apparatus of power plant, power transformer station at or under 35kV, such as cable branch box, combination transformer and incoming / outgoing line of GIS

[Contact Us](#)



35KV High Voltage Busbar Tubing , Heat Shrink Tubing

35kV high voltage busbar heat shrink tubing is widely used in the insulation protection of high-voltage switchgear busbars, thanks to its outstanding insulation

[Contact Us](#)



ES310

6.6kV and 11kV Single Busbar Indoor Switchgear (Cable Connected) Electricity North West Limited. Registered in England & Wales. Registered No. 2366949. Registered Office: Borron Street,

[Contact Us](#)





35kV RMU Busbar Failure Due to Installation Errors

35kV RMU busbar insulation failure analysis: improper installation causes, fault identification process, and prevention strategies for power stations.

[Contact Us](#)

BBIT/BPTM 5-35kV Class High Voltage, Heat-shrinkable Bus

CHOICE 3 For 35kV-ANSI or 36kV IEC bolted in-line connection only. 17. Clean busbar and insulation. nt, lean expo BBI Refer to Figure B for Dimension C and cut 2 pieces of BBIT as shown. 19. Position



[Contact Us](#)



35kV High Voltage Switchgear Installation and Engineering

Preparation stage: first ensure that all busbar materials used for connection are of satisfactory quality and have been accurately cut to the required length according to the design

[Contact Us](#)

Bus Protection Theory

Protection of the busbar may be complicated and varies with the topology of the bus. Many busbars connect all circuits to one common segment of busbar. The complication for these buses is simply



[Contact Us](#)



Contact Us

For datasheets, pricing, or custom fiber access solutions, please visit:
<https://www.frindel.es>