

35kV Indoor Busbar PT Panel





35kV Indoor Busbar PT Panel



What is a Bus PT (Potential transformer) in electrical

A Bus Potential Transformer (PT), also known as a Bus Voltage Transformer (VT), is a potential transformer connected to an electrical BUS. It is a

[Contact Us](#)

Minimum Electrical Clearance Standards

This document provides information on minimum electrical clearances for various voltage levels according to different standards and codes. It includes minimum

[Contact Us](#)



Indoor Instrument Transformers , ABB

Our portfolio, for IEC and other standards, is ideal for various medium voltage indoor applications, where air or gas-insulated medium voltage switchgear are the main installations, but also for compact

[Contact Us](#)



Standoff , Hubbell Power Systems

Inhibitors, Contact Aids, Sealants & PaintJoint Compound. InsulatorsDistribution ([Contact Us](#))



BUS BARS

To ensure a continuous, potential-free bus bar system, an insulated connection sleeve is fitted between the sections, covering the controlled bus bar ends. A

[Contact Us](#)



Technical Specification For 33 kV Gas Insulated Switchgear (GIS)

ear panels shall be filled with gas and checked for leakage in the factory. For a proper recycling / emergency replacement, a gas valve in gas compartment has to be provided. In ad All the live parts

[Contact Us](#)



SPECIFICATION NO

1.00Scope: 1.1. This specification covers design, manufacture, assembly, testing before supply, inspection, packing and delivery of metal clad partitioned,SF6 gas insulated switchgear confirming to

[Contact Us](#)



HT VCB Control Panel Manufacturer, 11 KV



VCB Panel

Pascalswitchcare is the best HT vcb control panel manufacturer and supplier such as VCB retrofit service and relay and control panel, vcb panel supplier, sub station

[Contact Us](#)



IEEE 5-35kV Indoor PT

IEEE Indoor PT Series BIL up to 200kV Vacuum cast using polyurethane resin Designed to meet C57.13

[Contact Us](#)



Understanding Busbar Sizing for 11 KV Transmission

Correctly sizing busbars for 11 KV transmission lines is essential for maintaining an efficient, reliable, and safe electrical distribution system. By

[Contact Us](#)



11kV Indoor & Outdoor panel

Switchgear Panels - 11kV Indoor & Outdoor panel 11kV Indoor & Outdoor panel The 11kV Indoor VCB Switchgear Panels of voltage range 3.3kV to 11kV and current ratings from 630A to 3150A. For

[Contact Us](#)





Busbars , Electrical Busbars & Copper Busbars , RS

Typically found inside industrial switchgear and control panels, busway enclosures and larger panel boards. They can also be used to connect high-voltage equipment.

[Contact Us](#)



Gas Insulated Switchgear portfolio

Gas-insulated switchgear (GIS) offers a more compact switchgear footprint (vs. air-insulated switchgear) consisting of high voltage components such as circuit-breakers, disconnectors, load interrupters and

[Contact Us](#)

Gas-Insulated Switchgear (GIS) for rated voltages of 35kV, up to 4000A

Fixed-mounted circuit-breaker switchgear 8DA and 8DB is indoor, factory-assembled, type-tested, single-pole metal-enclosed, SF6-insulated switchgear for rated voltages of 35 kV with metallic

[Contact Us](#)



Schneider Electric UK

Primary AIS MV Switchgear up to 24 kV - IoT-Connected Solution with EvoPacT HVX Circuit Breaker Primary air-insulated (AIS) MV switchgear designed for

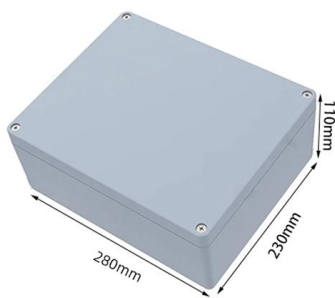
[Contact Us](#)



IEEE 5-35kV Indoor PT , GE Vernova

IEEE Indoor PT Series BIL up to 200kV Vacuum cast using polyurethane resin Designed to meet C57.13 UL Recognized & CSA Approved Some models IC Approved Typically installed in medium voltage

[Contact Us](#)



8DJH 36 for Secondary Distribution Systems up to 36 kV, Gas

RRT block Typical uses, ratings, standards 8DJH 36 switchgear is a factory-assembled, type-tested, 3-pole metal-enclosed single-busbar switchgear for indoor installation. 8DJH 36 switchgear is used in

[Contact Us](#)

10KV Switch Gear Insulator Switch Panel Busbar Support

Electrical Equipment Component 10KV Switch Gear Insulator Switch Panel Busbar Support Insulator Insulator for Ais. USUNE brand, 85*140mm, 1250A, 10KV., Alibaba

[Contact Us](#)



Power-Zone Metal-Enclosed Busway

Indoor supports are primed and painted to match the bus housing color. Power-Zone bus is designed and constructed for unbraced spans of 12-20 ft (366-610 cm). Consult your local Schneider Electric

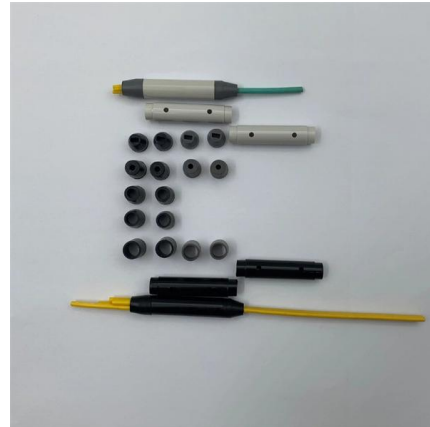
[Contact Us](#)



Document1

Model JVM-3 Indoor Voltage Transformer 2,400 V to 4,800 V, BIL 60 kv, 50/60 Hz Application
Designed for indoor service; suitable for operating meters, instruments, relays, and control devices.

[Contact Us](#)



HA-26-41-8BT2-EN.pdf

Busbar compartment Pressure relief upwards
Busbars made of flat copper, bolted from panel to panel
For rated normal current of up to 3150 A
Option: Insulated busbars with removable polyester cover at

[Contact Us](#)



Busbar

In electric power distribution, a busbar (also bus bar) is a metallic strip or bar, typically housed inside switchgear, panel boards, and busway enclosures for

[Contact Us](#)



Indoor VCB Panel

Type tested Indoor VCB Panels for power distribution from 11KV up to 36kV. Compact, reliable, and ideal for safe indoor use with easy maintenance.

[Contact Us](#)





Bus Bar Insulator Selection and Pricing Guide

PUTAI Electric offers a full line of epoxy bus bar insulators for MV panels, ring main units, and OEM switchgear. Popular models include:

- M12/M16 threaded types with 80mm-220mm height.
- Rated

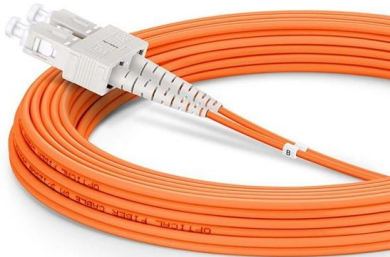
[Contact Us](#)



33kV Indoor Switchboard Specification , PDF , Relay

The document provides the technical specification for a 33kV indoor switchboard for a 350 cubic meter blast furnace being installed at Kharagpur, India. It includes

[Contact Us](#)



GA Drawing of 11kV Indoor Panel , PDF , Electricity

The document provides details of an 11kV 800A 25kA 5-VCB indoor panel including:

1. Dimensions for the meter chamber, PT chamber, and overall panel.
2. Busbar

[Contact Us](#)



Types 8DA10 and 8DB10 up to 40.5 kV

Medium-voltage switchgear 8DA/B is indoor, factory-assembled, type-tested, single-pole metal-enclosed, gas-insulated switchgear, for single-busbar and double-busbar applications, as well as for

[Contact Us](#)



8DA10-8DB10 , Siemens

Siemens 8DA10 single-bus and 8DB10 double-bus switchgear are arc-resistant, gas-insulated, medium-voltage solutions. Use these designs in limited spaces, harsh environments, and to lower your total

[Contact Us](#)



Contact Us

For datasheets, pricing, or custom fiber access solutions, please visit:
<https://www.frindel.es>