

330 Distribution Box



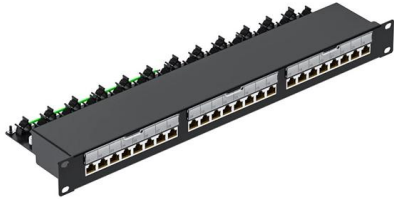


Overview

Safely distribute and manage electrical circuits with the Electro Tech 330 Distribution Box in Off White. Its 4-pole configuration makes it ideal for residential and light commercial electrical panels. Waterproof Distribution Box Surface-Mounted IP65 330 x 250 x 140 mm Grey - Switch Box with ABS Plastic Housing Outdoor - Socket Box Power Box for Indoor and Outdoor Installation - Horoz Electric Prices for items sold by Amazon include VAT. Technical data HxWxH=330x250x130mm, IP65, IK10, 1000V AC/DC, RAL7035 Distribution box; Single-phase current (230 V); 1 input; 7 outputs; Cod. P; MIDI; black (4055143302210) | WAGO The boxes can be equipped with busbars max diameter 20 mm tubular bars 400A, or 20 mm round copper 630A alternatively with terminal equipped connection inserts that allow different distribution possibilities with soft conductors. LSHF Cable (Low Smoke Halogen Free Cable) or also called LSZH (Low Smoke Zero Halogen) is a type of international classification that is used to cover the wires in the cable industry both steel and other types.



330 Distribution Box



ASB 6 5-4-330

ASB 6 5-4-330 - ASB with FIXCON connector; 6 ports ASB with FIXCON connector; 6 ports
[Request Quote Compare](#)

[Contact Us](#)

Area distribution box with cassettes to be equipped with 12 or 24 RJ45

Area distribution boxes are used when pre-equipping a work area. They centralise connections to provide flexibility when installing RJ45 telecommunications outlets.

[Contact Us](#)



DBV330MS

Experience streamlined power management with the DBSet 30 module VTPN distribution board designed for surface mounting. The enclosure material is

[Contact Us](#)

Enclosure Combi Distribution Box IP67 220-415V

Product Description: Introducing our Enclosure Combi Distribution Box, a robust and weather-resistant solution designed to house and protect electrical components



Mobile Distribution Boxes , DISTRO-DIRECT

mobile distribution boxes Users in over 68 countries worldwide appreciate the ruggedness, dependability, design and lifespan of our power distribution boxes.

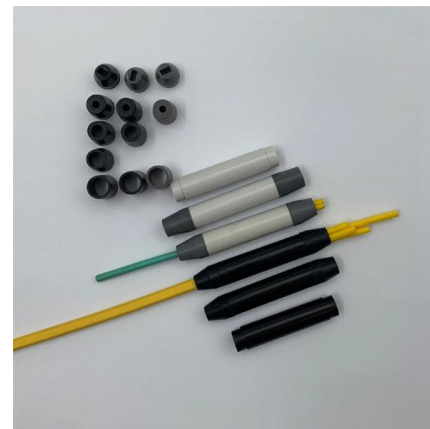
[Contact Us](#)



Coalesce Home Networking_CS330_01P

COALESCE HOME NETWORKING - CS-0330-01P Structured Wiring provides secure, reliable, and fast connectivity between consumer electronic devices in the home allows you to distribute high-quality

[Contact Us](#)



330 Distribution Box - Off White 4 Pole - Electro Tech

Safely distribute and manage electrical circuits with the Electro Tech 330 Distribution Box in Off White. Its 4-pole configuration makes it ideal for residential and light commercial electrical panels.

[Contact Us](#)

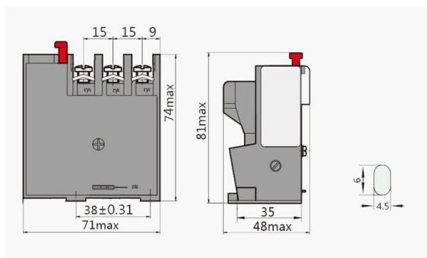




**Plastic distribution cabinet,
HxWxH=330x250x130mm, IP65, IK10,**

Details Home > Distribution boxes > Plastic distribution box > Plastic distribution box > Plastic distribution cabinet

[Contact Us](#)



RS PRO ABS Wall Box, IP65, 330 mm x 250 mm x 130 mm

Buy RS PRO ABS Wall Box, IP65, 330 mm x 250 mm x 130 mm or other Wall Boxes online from RS for next day delivery on your order plus great service and a great price from the largest electronics

[Contact Us](#)

Modular Distribution Cabinets Titan IP66

Enclosure made with modular profile. Able to withstand high electrical and mechanical voltages. A unique design made in A304L stainless steel (polished),

[Contact Us](#)



Distribution box (899-631/330-000) , WAGO India

The mechanical coding and color coding of the distribution box ensure error-free installation of the individual components - including protection against mismatching. The distribution box is protected in

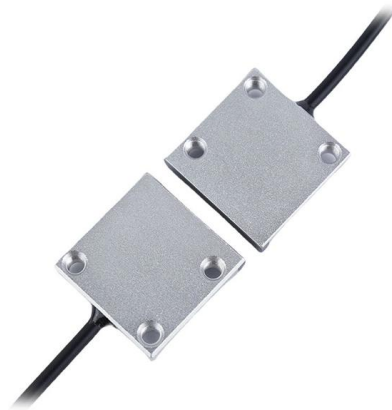
[Contact Us](#)



Distribution boxes

Discover our range of distribution box to outfit according to the number of empty slots available

[Contact Us](#)



Distribution boxes

45 x 45 aluminium distribution box length 330 mm (6 empty slots) Show product GGM BN7A

[Contact Us](#)



DISTRIB BOX 21FL 330 II/II SP

The boxes can be equipped with busbars max diameter 20 mm tubular bars 400A, or 20 mm round copper 630A alternatively with terminal equipped connection inserts that allow different distribution

[Contact Us](#)



Flush-mount distribution box Ref. MP42 , Solera

Flush-mount distribution box Ref. MP42 by Solera. Designed for 42 modules, metal frame and white door. Dimensions 330 x 613 x 88 mm. Thermal dissipation 35 W.

[Contact Us](#)

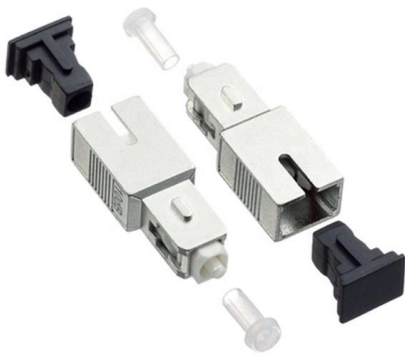
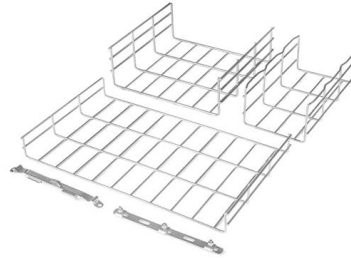




Distribution Box - Astryd Power Pvt. Ltd.

Distribution Box Distribution Box A distribution box is an essential component in electrical systems, serving as the central point for distributing electricity to various circuits, appliances, and devices

[Contact Us](#)



Lumberg Automation / Hirschmann ASB 6/LED 5-4-330/5M M12 Distribution

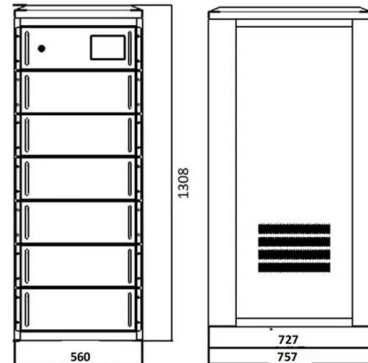
Lumberg Automation / Hirschmann ASB 6/LED 5-4-330/5M M12 Distribution Box, 6 Port, 4 Pole, 1Signal/Port, 5M, Pur, Black, 600004090 MFR Part #: ASB 6/LED 5-4-330/5M , RS Stock Number:

[Contact Us](#)

Distribution box (899-631/330-000) , WAGO

Distribution box; Single-phase current (230 V); 1 input; 7 outputs; Cod. P; MIDI; black (4055143302210) , WAGO.

[Contact Us](#)



ABS plastic electrical distribution box with IP65

IP65 environmental protection, which allows the distribution box to be installed

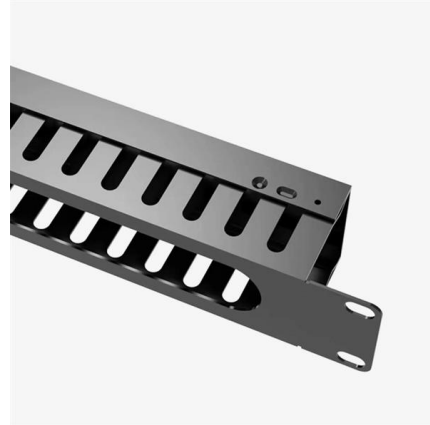
[Contact Us](#)



Area distribution boxes with connectors

Area distribution boxes with connectors 1.
GENERAL CHARACTERISTICS Boxes distribute low currents in an area equipped with 1 to 12 RJ 45 sockets. They centralise connections to ensure flexibility and

[Contact Us](#)



Distribution Box Guide: Types, Components & Solutions

Understand distribution boxes (DB boxes) in 5 minutes. Learn about types, components, functions, and uses. Find the perfect DB box for your needs.

[Contact Us](#)

JB330 Slope Top Switch Box , CTC

JB330: Premium Stainless Steel, Sloped Top Switch Box The JB330 sloped top, premium stainless steel switch box is used to convert the four-conductor input

[Contact Us](#)



Distribution box , OBO

Distributors - Distribution box. Item no. 2008852 Distribution box, 12 division units, with terminal strip, polycarbonate

[Contact Us](#)





Contact Us

For datasheets, pricing, or custom fiber access solutions, please visit:
<https://www.frindel.es>