

# 2178cd3M junction box





## 2178cd3M junction box

---



### **PV Junction Box: purpose and connection**

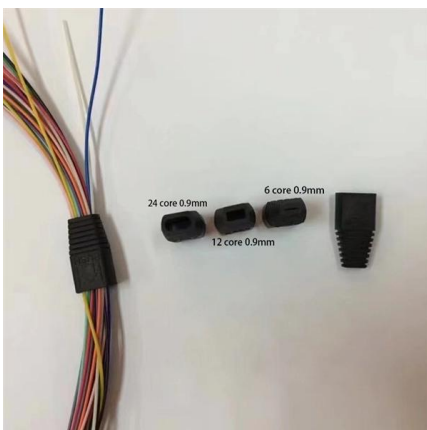
Diodes inside and opened junction box A quality PV junction box is certified (e.g. via TÜV) and regulates the heat and offers reliable long-term safety.

[Contact Us](#)

### **TE Connectivity**

Hier sollte eine Beschreibung angezeigt werden, diese Seite lässt dies jedoch nicht zu.

[Contact Us](#)



### **3M Fiber Optic Splice Closure 2178 Family**

One of the greatest advantages of the 3MTM Fiber Optic Splice Closure 2178 family is flexibility. With seven different closures and several tray choices and expansion kits, there are more configuration

[Contact Us](#)

### **Products**

EJBX series junction boxes are installed in industrial plants where there is a risk of explosion and fire and where combustible dust is present, classified as Zone 1, 2,

[Contact Us](#)



### **3M Fiber Optic Splice Closure 2178 Family Flexible Fiber**

The 3M Fiber Optic Splice Closure 2178 family includes seven distinct models (XSB, XLB, S, SL, LS, LL and XL) in both flame-retardant and non-flame-retardant versions, each with flexibility built-in for

[Contact Us](#)



### **5 Types of Electrical Boxes**

Learn about the types of electrical boxes you can use for your home wiring project. From junction boxes to work boxes, we'll help you choose the electrical box that fits your needs.

[Contact Us](#)



### **3MTM Fiber Optic Splice Closure 2178 Family**

All 2178 closures are designed to be easy to install, easy to use and easy to re-enter. The re-usable gasket makes tool-less re-entry as easy as any other system with almost no training necessary. The

[Contact Us](#)



## ESI Junction & Terminal boxes

BARTEC stainless steel housings and distribution boxes are designed and approved for Zone 1 and 2 as well as Zone 21 and 22. They are particularly suitable

[Contact Us](#)



## PVC

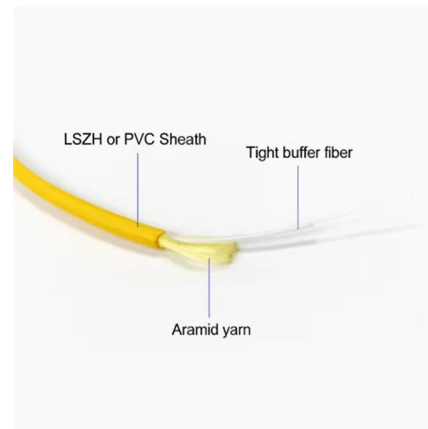
Get free shipping on qualified PVC Electrical Boxes, Conduit & Fittings products or Buy Online Pick Up in Store today in the Electrical Department.

[Contact Us](#)

## Type 4, 12 Mild Steel Junction Box (HJ Series)

Hammond's HJ series Type 4 and 12 mild steel junction boxes are available in a wide range of sizes and are designed for use as an instrument, electric, control,

[Contact Us](#)



## Installation Terminal Blocks and Connectors, WAGO

Whether in a junction box or distribution box, WAGO's installation terminal blocks and connectors offer you the right product for every installation job. Push-in

[Contact Us](#)

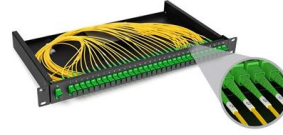




## Junction Boxes , McMaster-Carr

Choose from our selection of junction boxes, including over 2,800 products in a wide range of styles and sizes. Same and Next Day Delivery.

[Contact Us](#)



### **3M Fiber Closures Smart design makes your job easier.**

Optic Splice Closures 2178. 3MTM Fiber Dome Closures The 3MTM Fiber Dome Closure Family offers extensive installation versatility - below grade and aerial - along with multiple sizes that fit most

[Contact Us](#)

### **3M 2178CD Fiber Optic Joint Enclosure**

3M dome type fiber optic joint enclosure 2178CD offers 48 cores FOSC fiber closure box with 30-year span life, ideal for FTTX applications. Secure with heat shrink

[Contact Us](#)



### **2178 Splice Closure S/LS/LL/SL , Corning**

Providing excellent system flexibility for both existing and new fiber deployments, the 2178 closure saves you time and money, while the smart design makes your job

[Contact Us](#)



## Pull Box vs Junction Box: Key Differences & Uses

Learn the differences between pull boxes and junction boxes, when to use each, sizing tips, and NEC rules. Backed by Eabel's tech support.

[Contact Us](#)



## 3M 2178 Fiber Optic Dome Type Joint Box Splice Closure

3M 2178 Fiber Optic Dome Type Joint Box Splice Closure for WiFi & 4G Network Distribution. Ideal for FTTH, FTTB, FTTX Networks. 3-Year Warranty. Shop now!, Alibaba

[Contact Us](#)



## 2178 Fiber Closure

More flexibility for your complex fiber optic network. A full line of closures and accessories designed to protect fiber optic facilities. The Fiber Optic Splice Closure 2178 family has earned its reputation for

[Contact Us](#)



## Correctly Wiring Junction Boxes

Proper wiring of junction boxes: Choose the right box, prepare the cables, connect them, and check the connections.

[Contact Us](#)



### **32A 3 Terminal Maintenance Free Junction Box White**

Specifications Colour White Current Rating 32A  
Depth 30mm Dimensions (L)140 mm x (W)65 mm x (D)30 mm Guarantee 10 Years Length 140mm Material Plastic

[Contact Us](#)



### **Terminal boxes , Junction boxes , Ex , Ex e , Ex d , ATEX , Explosion**

We offer bespoke, custom-made terminal boxes and terminal box combinations, as well as standard products with short delivery times. Our products are certified for installation technologies all over the

[Contact Us](#)

### **2178-LS-2172 3M , Cables, Wires**

Exact specifications should be obtained from the product data sheet. This product requires a manufacturer-approved quote before it can be ordered. Orders must meet the manufacturer's

[Contact Us](#)



### **How to Wire a Junction Box for Socket and Light Circuits**

Learn how to wire a junction box to provide power to additional sockets, lights and switches easily and safely

[Contact Us](#)



## Instrument Junction Boxes

Junction Box Materials of Construction Junction boxes can be manufactured in a variety of materials including stainless steel, mild steel, glass reinforced polyester,

[Contact Us](#)



## Contact Us

---

For datasheets, pricing, or custom fiber access solutions, please visit:  
<https://www.frindel.es>