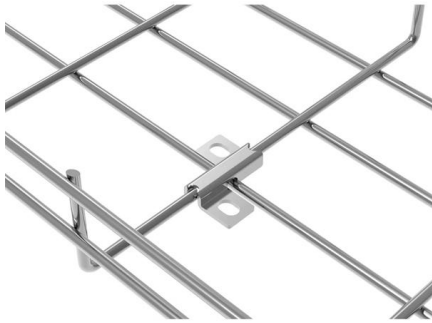


1310nm Optical Module Design





1310nm Optical Module Design



Dell 40GBASE-LR4 QSFP+ Module Price in Bangladesh

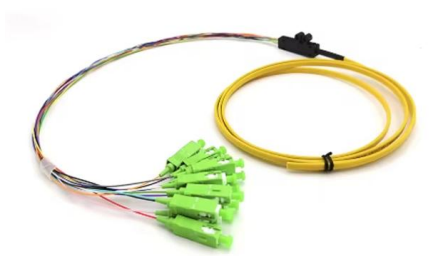
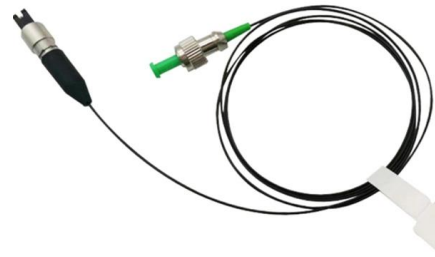
The Dell 40GBASE-LR4 QSFP+ 1310nm 10km Module stabilizes high-speed network traffic across enterprise infrastructure. Data centers, ISP backbones, and high-density switching environments

[Contact Us](#)

10G SFP+ ER Optical Transceiver Module , FiberMall

FiberMall SFP-10G31-ER Compatible 10G SFP+ ER transceiver module through up to 40km over single-mode fiber (SMF) using a wavelength of 1310nm via LC

[Contact Us](#)



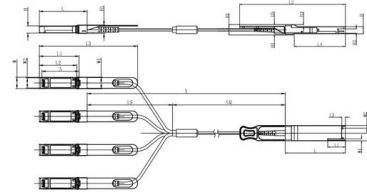
Arista XVR-00013-02 40GBPS Single-Mode Fibre 1310nm New

1310nm Optical Wavelength Technology The 1310nm wavelength utilized by the Arista XVR-00013-02 transceiver is widely recognized for its efficiency in single-mode fiber communication.

[Contact Us](#)

1310nm Laser Diodes, Comb, Fabry-Perot Lasers, SOA, Gain Chips

Superluminescent diodes at 1310 nm, offering broad-spectrum, low-coherence output, are optimized for OCT and imaging systems where reduced speckle noise and enhanced penetration depth are crucial.



Unit mm

QSFP28	L	L1	L2	L3	L4	W	W1	W2	H	H1	H2	H3	H4	H5	H6
Max	72.2	-	128	4.35	61.4	18.45	-	6.2	8.6	12.4	5.35	2.5	1.6	2.0	-
Type	72.0	-	4.20	61.2	18.35	-	-	8.5	12.2	5.2	2.3	1.5	1.8	6.55	-
Min	68.8	16.5	124	4.05	61.0	18.25	2.2	5.8	8.4	12.0	5.05	2.1	1.3	1.6	-

SFP28	L	L1	L2	L3	W	W1	W2	H	H1	A
Max	57.6	47.7	44.55	119.9	13.8	14.0	12.3	8.7	10.3	45.25
Type	57.4	47.5	44.35	117.9	13.55	13.8	12.1	8.5	10.1	45
Min	57.2	47.3	44.15	115.9	13.3	13.6	11.9	8.4	9.9	44.65



Low-Noise, Narrow-Linewidth Laser System, O-Band

This patented design enables exceptionally narrow Lorentzian linewidths of 150 Hz and the lowest available RIN of -160 dBc/Hz. When factory-set for optimized

[Contact Us](#)

10G SFP+ LR Transceiver, 10GBase-LR LC Single-Mode 1310nm 10km Optical

About this item ?10G High-Speed Single Mode Performance? This 10G SFP+ Transceiver is a professional LC Single Mode Module, supporting stable 10Gbps transmission with 1310nm

[Contact Us](#)



Single Fiber vs Dual Fiber Transceivers Understanding

In fiber optic communication systems, optical transceivers play a critical role in ensuring seamless data transmission. Among these devices, single

[Contact Us](#)



QSFP28 100G CWDM 1310nm 40km Single Lambda SMF Duplex LC Optical Module

YXF-CWDM-100G-Q28 CWDM QSFP28 optical transceiver is designed for 100GBASE OTN applications. It enables transmission distances up to 40km over single-mode fiber (SMF) via a duplex

[Contact Us](#)



CW1310-010

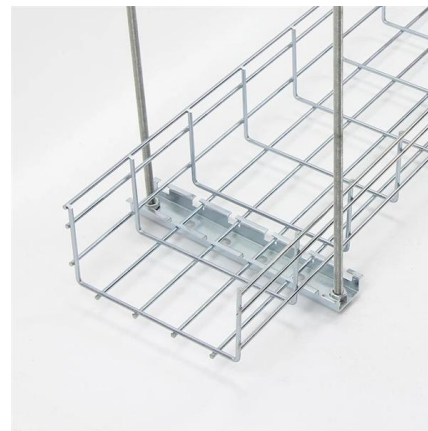
This laser module emits highly concentrated invisible light which can be hazardous to the human eye and skin. It is classified as CLASS 3R laser product according to IEC 60825-1 and 21 CFR Part

[Contact Us](#)

Custom 100G QSFP28 PSM4 Module , MPO Breakout , WolonFiber

The 100G QSFP28 PSM4 transceiver is specifically architected for high-density single-mode breakout topologies. Unlike CWDM4 modules that multiplex signals over a duplex LC interface, the PSM4

[Contact Us](#)



7832 10G SFP+ 1310nm Transceiver Guide

Select TPS 7832 10Gb/s SFP+ 1310nm optical transceivers for 20km single-mode links, with duplex LC, DDM, host fit, thermal checks, installation tips and RFQ guidance.

[Contact Us](#)



Huawei SFP-GE-LH40-SM1310 Compatible 1000Base SFP Module

1000BASE-LX SFP 1310nm 40km DOM Optical Transceiver Module Compatible with Huawei SFP-GE-LH40-SM1310 Experience reliable long-haul connectivity with Rollball enterprise-grade Gigabit SFP

[Contact Us](#)



1310nm Lasers and Laser Diode Modules , RPMC Lasers Inc

The monolithic design of the Matchbox Series laser includes thermally stabilized optics in a hermetically sealed housing, ensuring reliable and maintenance-free operation.

[Contact Us](#)



Pre-Terminated Patch Panel

- Standard 19" width
- Max 144 fibers in 1U
- MPO/Fusion Dual-Purpose



Removable Cable Management Tray



Transparent Front Cover

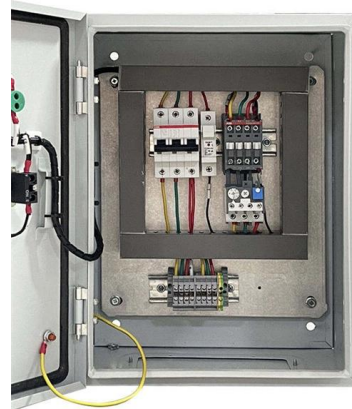


High-Quality Matte Coated Steel

10Gbps EML Module, Multiplex MTX310EW, 1310nm Electro

The MTX310EW electro-absorption modulated laser (EML) module consists of a multi-quantum-well DFB laser device with 1310nm nominal emission and a monolithically integrated electro-absorption

[Contact Us](#)



What Is 10GBASE-LR? SMF 1310nm 10km SFP+ Explained

A practical, engineer-grade guide to 10GBASE-LR: what it is, 1310nm single-mode SFP+ specs, optical budget examples, deployment best practices and troubleshooting.

[Contact Us](#)



Transceiver Optical Module Cisco 1.25G SFP 1310nm CWDM

Compatible Transceiver Optical Module Cisco 1.25G SFP 1310nm CWDM for enterprise networks systems. superior product. Express available.

[Contact Us](#)



1310nm Single Mode Fiber Optical Transceivers Explained

Learn what a 1310nm single mode fiber optical transceiver is, how it works, key specs, use cases, and when it's the best choice for your network.

[Contact Us](#)

optical transceiver sfp+ 10g single mode module 1310nm 10km lc

Upgrade networks with our optical transceiver sfp+ 10g single mode module 1310nm 10km lc. This LC transceiver delivers effortless 10km connectivity for data centers and servers.

[Contact Us](#)



1.6T OSFP 2xDR4/DR8, 1310nm, 500m, DDM, CDR,

1.6T OSFP 2xDR4/DR8, 1310nm, 500m, DDM, CDR, Dual MPO/APC 12F, Single-Mode, Optical Transceiver Module quantity

[Contact Us](#)



800G Optical Modules Explained: Standards, Types

Discover everything about 800G optical modules--standards, packaging, types & applications. Learn how they power AI, HPC & next-gen data

[Contact Us](#)



100G QSFP28-LR4 10km 1310nm Optical Transceiver/Optical Module

Buy low price 100g Qsfp28-lr4 10km 1310nm Optical Transceiver/optical Module by Guilin Tryin Technology Limited Company, a leading supplier from China. 2848 similar products are also

[Contact Us](#)

Belarus LS-SM3125-20I SFP28 25GBASE-LR 1310nm 20km DOM

LINK-PP LS-SM3125-20I SFP28 25GBASE-LR Duplex Optical Transceiver Module (SMF, 1310nm, 20km, LC, DOM, Industrial) The LS-SM3125-20I SFP28 transceiver provides 25GBase-LR

[Contact Us](#)



Sichuan Travis Technology Co.,Ltd contact info

The module incorporates 1310nm burst-mode transmitter and 1490nm continuous-mode receiver. The transmitter section uses a 1310nm DFB laser and an integrated BM laser driver which designed to

[Contact Us](#)



Technical Characteristics Of 10G Optical Modules With

There are three wavelength windows for 10G optical module communication applications, namely the 850nm window, 1310nm window, and

[Contact Us](#)



What is an Optical Module?

Explore the world of optical modules, essential components in optical fiber communication. Learn about the different types of optical modules, their

[Contact Us](#)

Contact Us

For datasheets, pricing, or custom fiber access solutions, please visit:
<https://www.frindel.es>